

Datasheet for ABIN1538128  
**anti-PPP4R2 antibody (AA 228-254)**[Go to Product page](#)

## 1 Image

## Overview

Quantity:	400 µL
Target:	PPP4R2
Binding Specificity:	AA 228-254
Reactivity:	Human, Mouse
Host:	Rabbit
Clonality:	Polyclonal
Conjugate:	This PPP4R2 antibody is un-conjugated
Application:	Western Blotting (WB)

## Product Details

Immunogen:	This PPP4R2 antibody is generated from rabbits immunized with a KLH conjugated synthetic peptide between 228-254 amino acids from the Central region of human PPP4R2.
Clone:	RB37606
Isotype:	Ig Fraction
Purification:	This antibody is purified through a protein A column, followed by peptide affinity purification.

## Target Details

Target:	PPP4R2
Alternative Name:	PPP4R2 ( <a href="#">PPP4R2 Products</a> )
Background:	Regulatory subunit of serine/threonine-protein phosphatase 4 (PP4). May regulate the activity

## Target Details

of PPP4C at centrosomal microtubule organizing centers. Its interaction with the SMN complex leads to enhance the temporal localization of snRNPs, suggesting a role of PPP4C in maturation of spliceosomal snRNPs. The PPP4C-PPP4R2-PPP4R3A PP4 complex specifically dephosphorylates H2AFX phosphorylated on 'Ser-140' (gamma-H2AFX) generated during DNA replication and required for DNA DSB repair.

Molecular Weight: 46898

Gene ID: 151987

NCBI Accession: [NP\\_777567](#)

UniProt: [Q9NY27](#)

## Application Details

Application Notes: WB: 1:1000

Restrictions: For Research Use only

## Handling

Format: Liquid

Buffer: Purified polyclonal antibody supplied in PBS with 0.09 % (W/V) sodium azide.

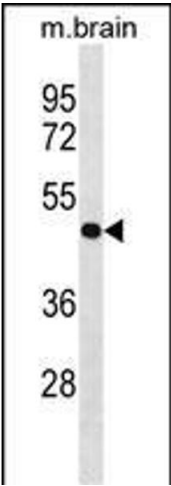
Preservative: Sodium azide

Precaution of Use: This product contains Sodium azide: a POISONOUS AND HAZARDOUS SUBSTANCE which should be handled by trained staff only.

Storage: 4 °C,-20 °C

Storage Comment: PPP4R2 Antibody (Center) can be refrigerated at 2-8 °C for up to 6 months. For long term storage, keep at -20 °C.

Expiry Date: 6 months



Western Blotting

**Image 1.** P4R2 Antibody (Center) (ABIN1538128 and ABIN2849960) western blot analysis in mouse brain tissue lysates (35 µg/lane). This demonstrates the P4R2 antibody detected the P4R2 protein (arrow).