

Datasheet for ABIN1538129
anti-HRH4 antibody (AA 228-256)[Go to Product page](#)

1 Image

Overview

Quantity:	400 µL
Target:	HRH4
Binding Specificity:	AA 228-256
Reactivity:	Human
Host:	Rabbit
Clonality:	Polyclonal
Conjugate:	This HRH4 antibody is un-conjugated
Application:	Western Blotting (WB)

Product Details

Immunogen:	This HRH4 antibody is generated from rabbits immunized with a KLH conjugated synthetic peptide between 228-256 amino acids from the Central region of human HRH4.
Clone:	RB36815
Isotype:	Ig Fraction
Purification:	This antibody is purified through a protein A column, followed by peptide affinity purification.

Target Details

Target:	HRH4
Alternative Name:	HRH4 (HRH4 Products)
Background:	Histamine is a ubiquitous messenger molecule released from mast cells, enterochromaffin-like

Target Details

cells, and neurons. Its various actions are mediated by a family of histamine receptors, which are a subset of the G-protein coupled receptor superfamily. This gene encodes a histamine receptor that is predominantly expressed in haematopoietic cells. The protein is thought to play a role in inflammation and allergy responses. Multiple transcript variants encoding different isoforms have been found for this gene.

Molecular Weight: 44496

Gene ID: 59340

NCBI Accession: [NP_001137300](#), [NP_001153638](#), [NP_067637](#)

UniProt: [Q9H3N8](#)

Application Details

Application Notes: WB: 1:1000

Restrictions: For Research Use only

Handling

Format: Liquid

Buffer: Purified polyclonal antibody supplied in PBS with 0.09 % (W/V) sodium azide.

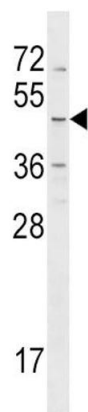
Preservative: Sodium azide

Precaution of Use: This product contains Sodium azide: a POISONOUS AND HAZARDOUS SUBSTANCE which should be handled by trained staff only.

Storage: 4 °C,-20 °C

Storage Comment: HRH4 Antibody (Center) can be refrigerated at 2-8 °C for up to 6 months. For long term storage, keep at -20 °C.

Expiry Date: 6 months



Western Blotting

Image 1. HRH4 Antibody (Center) (ABIN1538129 and ABIN2848687) western blot analysis in NCI- cell line lysates (35 µg/lane). This demonstrates the HRH4 antibody detected the HRH4 protein (arrow).