

Datasheet for ABIN1538131
anti-Leupaxin antibody (AA 229-257)[Go to Product page](#)

2 Images

Overview

Quantity:	400 µL
Target:	Leupaxin (LPXN)
Binding Specificity:	AA 229-257
Reactivity:	Human, Mouse
Host:	Rabbit
Clonality:	Polyclonal
Conjugate:	This Leupaxin antibody is un-conjugated
Application:	Western Blotting (WB)

Product Details

Immunogen:	This LPXN antibody is generated from rabbits immunized with a KLH conjugated synthetic peptide between 229-257 amino acids from the Central region of human LPXN.
Clone:	RB37022
Isotype:	Ig Fraction
Purification:	This antibody is purified through a protein A column, followed by peptide affinity purification.

Target Details

Target:	Leupaxin (LPXN)
Alternative Name:	LPXN (LPXN Products)
Background:	The product encoded by this gene is preferentially expressed in hematopoietic cells and

Target Details

belongs to the paxillin protein family. Similar to other members of this focal-adhesion-associated adaptor-protein family, it has four leucine-rich LD-motifs in the N-terminus and four LIM domains in the C-terminus. It may function in cell type-specific signaling by associating with PYK2, a member of focal adhesion kinase family. As a substrate for a tyrosine kinase in lymphoid cells, this protein may also function in, and be regulated by, tyrosine kinase activity. Alternative splicing results in multiple transcript variants encoding distinct isoforms.

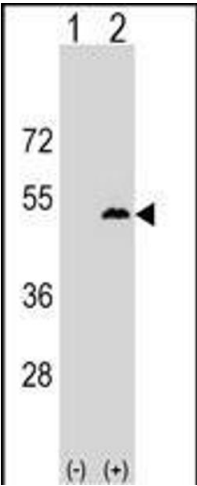
Molecular Weight:	43332
Gene ID:	9404
NCBI Accession:	NP_001137467 , NP_004802
UniProt:	O60711

Application Details

Application Notes:	WB: 1:1000. WB: 1:1000
Restrictions:	For Research Use only

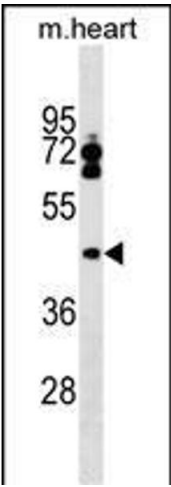
Handling

Format:	Liquid
Buffer:	Purified polyclonal antibody supplied in PBS with 0.09 % (W/V) sodium azide.
Preservative:	Sodium azide
Precaution of Use:	This product contains Sodium azide: a POISONOUS AND HAZARDOUS SUBSTANCE which should be handled by trained staff only.
Storage:	4 °C, -20 °C
Storage Comment:	LPXN Antibody (Center) can be refrigerated at 2-8 °C for up to 6 months. For long term storage, keep at -20 °C.
Expiry Date:	6 months



Western Blotting

Image 1. Western blot analysis of LPXN (arrow) using rabbit polyclonal LPXN Antibody (Center) (ABIN1538131 and ABIN2849342). 293 cell lysates (2 µg/lane) either nontransfected (Lane 1) or transiently transfected (Lane 2) with the LPXN gene.



Western Blotting

Image 2. LPXN Antibody (Center) (ABIN1538131 and ABIN2849342) western blot analysis in mouse heart tissue lysates (35 µg/lane). This demonstrates the LPXN antibody detected the LPXN protein (arrow).