

Datasheet for ABIN1538133  
**anti-PLIN3 antibody (AA 230-257)**[Go to Product page](#)

## 1 Image

## Overview

Quantity:	400 µL
Target:	PLIN3
Binding Specificity:	AA 230-257
Reactivity:	Human
Host:	Rabbit
Clonality:	Polyclonal
Conjugate:	This PLIN3 antibody is un-conjugated
Application:	Western Blotting (WB)

## Product Details

Immunogen:	This PLIN3 antibody is generated from rabbits immunized with a KLH conjugated synthetic peptide between 230-257 amino acids from the Central region of human PLIN3.
Clone:	RB39623
Isotype:	Ig Fraction
Purification:	This antibody is purified through a protein A column, followed by peptide affinity purification.

## Target Details

Target:	PLIN3
Alternative Name:	PLIN3 ( <a href="#">PLIN3 Products</a> )
Background:	Mannose 6-phosphate receptors (MPRs) deliver lysosomal hydrolase from the Golgi to

## Target Details

endosomes and then return to the Golgi complex. The protein encoded by this gene interacts with the cytoplasmic domains of both cation-independent and cation-dependent MPRs, and is required for endosome-to-Golgi transport. This protein also binds directly to the GTPase RAB9 (RAB9A), a member of the RAS oncogene family. The interaction with RAB9 has been shown to increase the affinity of this protein for its cargo. Multiple transcript variants encoding different isoforms have been found for this gene.

Molecular Weight: 47075

Gene ID: 10226

NCBI Accession: [NP\\_001157661](#), [NP\\_001157666](#), [NP\\_005808](#)

UniProt: [O60664](#)

## Application Details

Application Notes: WB: 1:1000

Restrictions: For Research Use only

## Handling

Format: Liquid

Buffer: Purified polyclonal antibody supplied in PBS with 0.09 % (W/V) sodium azide.

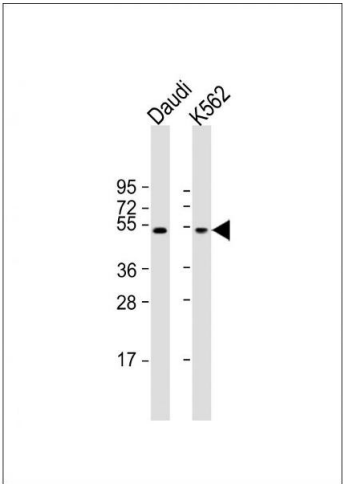
Preservative: Sodium azide

Precaution of Use: This product contains Sodium azide: a POISONOUS AND HAZARDOUS SUBSTANCE which should be handled by trained staff only.

Storage: 4 °C, -20 °C

Storage Comment: PLIN3 Antibody (Center) can be refrigerated at 2-8 °C for up to 6 months. For long term storage, keep at -20 °C.

Expiry Date: 6 months



Western Blotting

**Image 1.** All lanes : Anti-PLIN3 Antibody (Center) at 1:1000 dilution Lane 1: Daudi whole cell lysate Lane 2: K562 whole cell lysate Lysates/proteins at 20 µg per lane. Secondary Goat Anti-Rabbit IgG, (H+L), Peroxidase conjugated at 1/10000 dilution. Predicted band size : 47 kDa Blocking/Dilution buffer: 5 % NFDM/TBST.