

Datasheet for ABIN1538137
anti-NPY1R antibody (AA 231-260)[Go to Product page](#)

1 Image

Overview

Quantity:	400 µL
Target:	NPY1R
Binding Specificity:	AA 231-260
Reactivity:	Human
Host:	Rabbit
Clonality:	Polyclonal
Conjugate:	This NPY1R antibody is un-conjugated
Application:	Western Blotting (WB)

Product Details

Immunogen:	This NPY1R antibody is generated from rabbits immunized with a KLH conjugated synthetic peptide between 231-260 amino acids from the Central region of human NPY1R.
Clone:	RB39326
Isotype:	Ig Fraction
Predicted Reactivity:	Pig
Purification:	This antibody is purified through a protein A column, followed by peptide affinity purification.

Target Details

Target:	NPY1R
Alternative Name:	NPY1R (NPY1R Products)

Target Details

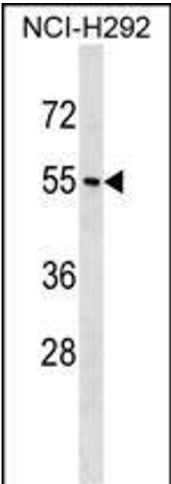
Background:	Neuropeptide Y (NPY, MIM 162640) is one of the most abundant neuropeptides in the mammalian nervous system and exhibits a diverse range of important physiologic activities, including effects on psychomotor activity, food intake, regulation of central endocrine secretion, and potent vasoactive effects on the cardiovascular system. Two major subtypes of NPY (Y1 and Y2) have been defined by pharmacologic criteria. NPY receptors, such as NPY1R, have been identified in a variety of tissues, including brain, spleen, small intestine, kidney, testis, placenta, and aortic smooth muscle (Herzog et al., 1992 [PubMed 1321422]).
Molecular Weight:	44392
Gene ID:	4886
NCBI Accession:	NP_000900
UniProt:	P25929
Pathways:	Negative Regulation of Hormone Secretion , Feeding Behaviour

Application Details

Application Notes:	WB: 1:1000
Restrictions:	For Research Use only

Handling

Format:	Liquid
Buffer:	Purified polyclonal antibody supplied in PBS with 0.09 % (W/V) sodium azide.
Preservative:	Sodium azide
Precaution of Use:	This product contains Sodium azide: a POISONOUS AND HAZARDOUS SUBSTANCE which should be handled by trained staff only.
Storage:	4 °C,-20 °C
Storage Comment:	NPY1R Antibody (Center) can be refrigerated at 2-8 °C for up to 6 months. For long term storage, keep at -20 °C.
Expiry Date:	6 months



Western Blotting

Image 1. NPY1R Antibody (Center) (ABIN1538137 and ABIN2850234) western blot analysis in NCI- cell line lysates (35 µg/lane). This demonstrates the NPY1R antibody detected the NPY1R protein (arrow).