

Datasheet for ABIN1538139  
**anti-MTRF1 antibody (AA 232-259)**[Go to Product page](#)

## 1 Image

## Overview

Quantity:	400 µL
Target:	MTRF1
Binding Specificity:	AA 232-259
Reactivity:	Human
Host:	Rabbit
Clonality:	Polyclonal
Conjugate:	This MTRF1 antibody is un-conjugated
Application:	Western Blotting (WB)

## Product Details

Immunogen:	This MTRF1 antibody is generated from rabbits immunized with a KLH conjugated synthetic peptide between 232-259 amino acids from the Central region of human MTRF1.
Clone:	RB37497
Isotype:	Ig Fraction
Predicted Reactivity:	B, M
Purification:	This antibody is purified through a protein A column, followed by peptide affinity purification.

## Target Details

Target:	MTRF1
Alternative Name:	MTRF1 ( <a href="#">MTRF1 Products</a> )

## Target Details

**Background:** The protein encoded by this gene was determined by in silico methods to be a mitochondrial protein with similarity to the peptide chain release factors (RFs) discovered in bacteria and yeast. The peptide chain release factors direct the termination of translation in response to the peptide chain termination codons. Initially thought to have a role in the termination of mitochondria protein synthesis, a recent publication found no mitochondrial translation release functionality. Multiple alternatively spliced transcript variants have been suggested by mRNA and EST data, however, their full-length natures are not clear. [provided by RefSeq].

**Molecular Weight:** 52306

**Gene ID:** 9617

**NCBI Accession:** [NP\\_004285](#)

**UniProt:** [O75570](#)

## Application Details

**Application Notes:** WB: 1:1000

**Restrictions:** For Research Use only

## Handling

**Format:** Liquid

**Buffer:** Purified polyclonal antibody supplied in PBS with 0.09 % (W/V) sodium azide.

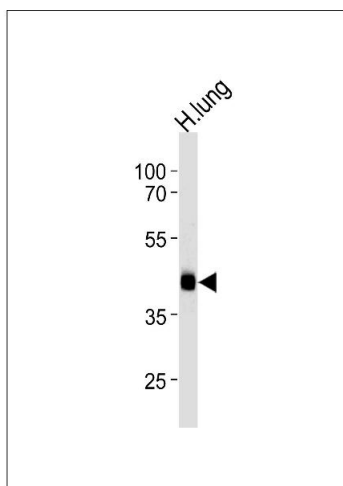
**Preservative:** Sodium azide

**Precaution of Use:** This product contains Sodium azide: a POISONOUS AND HAZARDOUS SUBSTANCE which should be handled by trained staff only.

**Storage:** 4 °C, -20 °C

**Storage Comment:** MTRF1 Antibody (Center) can be refrigerated at 2-8 °C for up to 6 months. For long term storage, keep at -20 °C.

**Expiry Date:** 6 months



#### Western Blotting

**Image 1.** Western blot analysis of lysate from human lung tissue lysate, using MTRF1 Antibody (Center) (ABIN1538139 and ABIN2849080). (ABIN1538139 and ABIN2849080) was diluted at 1:1000 at each lane. A goat anti-rabbit IgG H&L(HRP) at 1:5000 dilution was used as the secondary antibody. Lysate at 35 µg per lane.