

Datasheet for ABIN1538148
anti-GPATCH4 antibody (AA 236-262)[Go to Product page](#)

1 Image

Overview

Quantity:	400 µL
Target:	GPATCH4
Binding Specificity:	AA 236-262
Reactivity:	Human
Host:	Rabbit
Clonality:	Polyclonal
Conjugate:	This GPATCH4 antibody is un-conjugated
Application:	Western Blotting (WB)

Product Details

Immunogen:	This GPATCH4 antibody is generated from rabbits immunized with a KLH conjugated synthetic peptide between 236-262 amino acids from the Central region of human GPATCH4.
Clone:	RB37527
Isotype:	Ig Fraction
Purification:	This antibody is purified through a protein A column, followed by peptide affinity purification.

Target Details

Target:	GPATCH4
Alternative Name:	GPATCH4 (GPATCH4 Products)
Background:	GPATCH4 (G patch domain-containing protein 4) is a 446 amino acid protein containing one G-

Target Details

patch domain. Existing as three alternatively spliced isoforms, the gene encoding GPATCH4 maps to human chromosome 1q23.1 and mouse chromosome 3 F1. Spanning around 260 million base pairs, chromosome 1 is the largest human chromosome and comprises 8 % of the human genome. There are about 3,000 genes on chromosome 1, and considering the great number of genes there are also a large number of diseases associated with chromosome 1. Notably, the rare aging disease Hutchinson-Gilford progeria is associated with the LMNA gene which encodes lamin A. Stickler syndrome, Parkinsons, Gaucher disease and Usher syndrome are also associated with chromosome 1. A breakpoint has been identified in 1q which disrupts the DISC1 gene and is linked to schizophrenia. Aberrations in chromosome 1 are found in a variety of cancers including head and neck cancer, malignant melanoma and multiple myeloma.

Molecular Weight: 50381

Gene ID: 54865

UniProt: [Q5T3I0](#)

Application Details

Application Notes: WB: 1:1000

Restrictions: For Research Use only

Handling

Format: Liquid

Buffer: Purified polyclonal antibody supplied in PBS with 0.09 % (W/V) sodium azide.

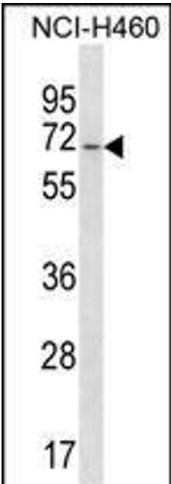
Preservative: Sodium azide

Precaution of Use: This product contains Sodium azide: a POISONOUS AND HAZARDOUS SUBSTANCE which should be handled by trained staff only.

Storage: 4 °C, -20 °C

Storage Comment: GPATCH4 Antibody (Center) can be refrigerated at 2-8 °C for up to 6 months. For long term storage, keep at -20 °C.

Expiry Date: 6 months



Western Blotting

Image 1. GTCH4 Antibody (Center) (ABIN1538148 and ABIN2850057) western blot analysis in NCI- cell line lysates (35 µg/lane). This demonstrates the GTCH4 antibody detected the GTCH4 protein (arrow).