



Datasheet for ABIN1538149

anti-Phosphoglucomutase 3 antibody (AA 237-263)



[Go to Product page](#)

1 Image

Overview

| | |
|----------------------|---|
| Quantity: | 400 µL |
| Target: | Phosphoglucomutase 3 (PGM3) |
| Binding Specificity: | AA 237-263 |
| Reactivity: | Human |
| Host: | Rabbit |
| Clonality: | Polyclonal |
| Conjugate: | This Phosphoglucomutase 3 antibody is un-conjugated |
| Application: | Western Blotting (WB) |

Product Details

| | |
|---------------|---|
| Immunogen: | This PGM3 antibody is generated from rabbits immunized with a KLH conjugated synthetic peptide between 237-263 amino acids from the Central region of human PGM3. |
| Clone: | RB39616 |
| Isotype: | Ig Fraction |
| Purification: | This antibody is purified through a protein A column, followed by peptide affinity purification. |

Target Details

| | |
|-------------------|---|
| Target: | Phosphoglucomutase 3 (PGM3) |
| Alternative Name: | PGM3 (PGM3 Products) |
| Background: | PGM3 interconverts GlcNAc-6-P and GlcNAc-1-P. |

Target Details

| | |
|-------------------|---|
| Molecular Weight: | 59852 |
| Gene ID: | 5238 |
| NCBI Accession: | NP_001186846 , NP_001186848 , NP_056414 |
| UniProt: | O95394 |

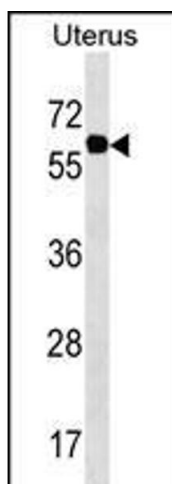
Application Details

| | |
|--------------------|-----------------------|
| Application Notes: | WB: 1:1000 |
| Restrictions: | For Research Use only |

Handling

| | |
|--------------------|--|
| Format: | Liquid |
| Buffer: | Purified polyclonal antibody supplied in PBS with 0.09 % (W/V) sodium azide. |
| Preservative: | Sodium azide |
| Precaution of Use: | This product contains Sodium azide: a POISONOUS AND HAZARDOUS SUBSTANCE which should be handled by trained staff only. |
| Storage: | 4 °C, -20 °C |
| Storage Comment: | PGM3 Antibody (Center) can be refrigerated at 2-8 °C for up to 6 months. For long term storage, keep at -20 °C. |
| Expiry Date: | 6 months |

Images



Western Blotting

Image 1. PGM3 Antibody (Center) (ABIN1538149 and ABIN2850274) western blot analysis in Uterus tissue lysates (35 µg/lane). This demonstrates the PGM3 antibody detected the PGM3 protein (arrow).