

Datasheet for ABIN1538152
anti-RCSD1 antibody (AA 237-266)



[Go to Product page](#)

1 Image

Overview

Quantity:	400 µL
Target:	RCSD1
Binding Specificity:	AA 237-266
Reactivity:	Human
Host:	Rabbit
Clonality:	Polyclonal
Conjugate:	This RCSD1 antibody is un-conjugated
Application:	Western Blotting (WB)

Product Details

Immunogen:	This RCSD1 antibody is generated from rabbits immunized with a KLH conjugated synthetic peptide between 237-266 amino acids from the Central region of human RCSD1.
Clone:	RB23565
Isotype:	Ig Fraction
Purification:	This antibody is purified through a protein A column, followed by peptide affinity purification.

Target Details

Target:	RCSD1
Alternative Name:	RCSD1 (RCSD1 Products)
Background:	Stress-induced phosphorylation of CAPZIP may regulate the ability of F-actin-capping protein to

Target Details

remodel actin filament assembly.

Molecular Weight: 44504

Gene ID: 92241

NCBI Accession: [NP_443094](#)

UniProt: [Q6JBY9](#)

Application Details

Application Notes: WB: 1:1000

Restrictions: For Research Use only

Handling

Format: Liquid

Buffer: Purified polyclonal antibody supplied in PBS with 0.09 % (W/V) sodium azide.

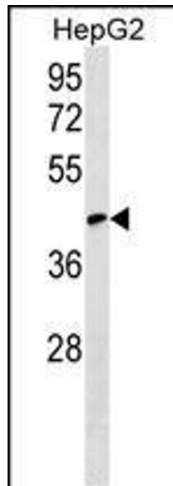
Preservative: Sodium azide

Precaution of Use: This product contains Sodium azide: a POISONOUS AND HAZARDOUS SUBSTANCE which should be handled by trained staff only.

Storage: 4 °C,-20 °C

Storage Comment: RCSD1 Antibody (Center) can be refrigerated at 2-8 °C for up to 6 months. For long term storage, keep at -20 °C.

Expiry Date: 6 months



Western Blotting

Image 1. RCSD1 Antibody (Center) (ABIN1538152 and ABIN2849645) western blot analysis in HepG2 cell line lysates (35 µg/lane). This demonstrates the RCSD1 antibody detected the RCSD1 protein (arrow).