



[Go to Product page](#)

Datasheet for ABIN1538153
anti-RBMXL1 antibody (AA 237-263)

1 Image

Overview

Quantity:	400 µL
Target:	RBMXL1
Binding Specificity:	AA 237-263
Reactivity:	Human
Host:	Rabbit
Clonality:	Polyclonal
Conjugate:	This RBMXL1 antibody is un-conjugated
Application:	Western Blotting (WB)

Product Details

Immunogen:	This RBMXL1 antibody is generated from rabbits immunized with a KLH conjugated synthetic peptide between 237-263 amino acids from the Central region of human RBMXL1.
Clone:	RB39652
Isotype:	Ig Fraction
Predicted Reactivity:	M, Rat
Purification:	This antibody is purified through a protein A column, followed by peptide affinity purification.

Target Details

Target:	RBMXL1
Alternative Name:	RBMXL1 (RBMXL1 Products)

Target Details

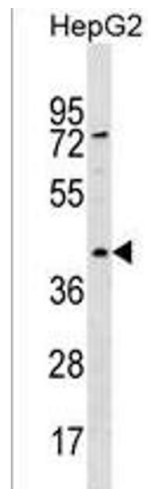
Background:	This gene represents a retrogene of RNA binding motif protein, X-linked (RBMX), which is located on chromosome X. While all introns in the coding sequence have been processed out compared to the RBMX locus, the ORF is intact and there is specific evidence for transcription at this location. The preservation of the ORF by purifying selection in all Old World monkeys carrying it suggests that this locus is likely to be functional, possibly during male meiosis when X chromosomal genes are silenced or during haploid stages of spermatogenesis. This gene shares 5' exon structure with the cysteine conjugate-beta lyase 2 locus on chromosome 1, but the coding sequences are non-overlapping. Alternative splicing results in two transcript variants.
Molecular Weight:	42142
Gene ID:	494115
NCBI Accession:	NP_001156008 , NP_062556
UniProt:	Q96E39
Pathways:	Ribonucleoprotein Complex Subunit Organization

Application Details

Application Notes:	WB: 1:1000
Restrictions:	For Research Use only

Handling

Format:	Liquid
Buffer:	Purified polyclonal antibody supplied in PBS with 0.09 % (W/V) sodium azide.
Preservative:	Sodium azide
Precaution of Use:	This product contains Sodium azide: a POISONOUS AND HAZARDOUS SUBSTANCE which should be handled by trained staff only.
Storage:	4 °C,-20 °C
Storage Comment:	RBMXL1 Antibody (Center) can be refrigerated at 2-8 °C for up to 6 months. For long term storage, keep at -20 °C.
Expiry Date:	6 months



Western Blotting

Image 1. RBMXL1 Antibody (Center) (ABIN1538153 and ABIN2850416) western blot analysis in HepG2 cell line lysates (35 µg/lane). This demonstrates the RBMXL1 antibody detected the RBMXL1 protein (arrow).