

Datasheet for ABIN1538155
anti-SGCA antibody (AA 239-266)[Go to Product page](#)

1 Image

Overview

Quantity:	400 µL
Target:	SGCA
Binding Specificity:	AA 239-266
Reactivity:	Human
Host:	Rabbit
Clonality:	Polyclonal
Conjugate:	This SGCA antibody is un-conjugated
Application:	Western Blotting (WB)

Product Details

Immunogen:	This SGCA antibody is generated from rabbits immunized with a KLH conjugated synthetic peptide between 239-266 amino acids from the Central region of human SGCA.
Clone:	RB36903
Isotype:	Ig Fraction
Purification:	This antibody is purified through a protein A column, followed by peptide affinity purification.

Target Details

Target:	SGCA
Alternative Name:	SGCA (SGCA Products)
Background:	This gene encodes a component of the dystrophin-glycoprotein complex (DGC), which is critical

Target Details

to the stability of muscle fiber membranes and to the linking of the actin cytoskeleton to the extracellular matrix. Its expression is thought to be restricted to striated muscle. Mutations in this gene result in type 2D autosomal recessive limb-girdle muscular dystrophy. Multiple transcript variants encoding different isoforms have been found for this gene.

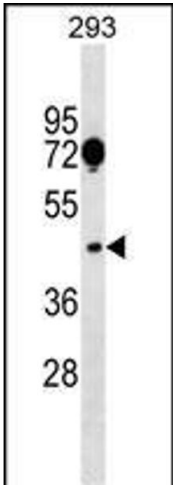
Molecular Weight:	42875
Gene ID:	6442
NCBI Accession:	NP_000014 , NP_001129169
UniProt:	Q16586

Application Details

Application Notes:	WB: 1:1000
Restrictions:	For Research Use only

Handling

Format:	Liquid
Buffer:	Purified polyclonal antibody supplied in PBS with 0.09 % (W/V) sodium azide.
Preservative:	Sodium azide
Precaution of Use:	This product contains Sodium azide: a POISONOUS AND HAZARDOUS SUBSTANCE which should be handled by trained staff only.
Storage:	4 °C,-20 °C
Storage Comment:	SGCA Antibody (Center) can be refrigerated at 2-8 °C for up to 6 months. For long term storage, keep at -20 °C.
Expiry Date:	6 months



Western Blotting

Image 1. SGCA Antibody (Center) (ABIN1538155 and ABIN2848855) western blot analysis in 293 cell line lysates (35 µg/lane). This demonstrates the SGCA antibody detected the SGCA protein (arrow).