



[Go to Product page](#)

Datasheet for ABIN1538160
anti-GNL1 antibody (AA 240-266)

1 Image

Overview

Quantity:	400 µL
Target:	GNL1
Binding Specificity:	AA 240-266
Reactivity:	Human
Host:	Rabbit
Clonality:	Polyclonal
Conjugate:	This GNL1 antibody is un-conjugated
Application:	Western Blotting (WB)

Product Details

Immunogen:	This GNL1 antibody is generated from rabbits immunized with a KLH conjugated synthetic peptide between 240-266 amino acids from the Central region of human GNL1.
Clone:	RB37523
Isotype:	Ig Fraction
Predicted Reactivity:	Pr
Purification:	This antibody is purified through a protein A column, followed by peptide affinity purification.

Target Details

Target:	GNL1
Alternative Name:	GNL1 (GNL1 Products)

Target Details

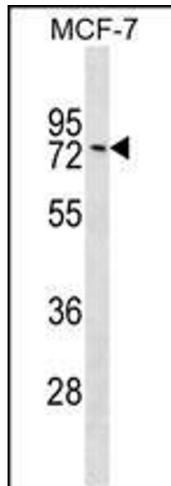
Background:	The GNL1 gene, identified in the human major histocompatibility complex class I region, shows a high degree of similarity with its mouse counterpart. The GNL1 gene is located less than 2 kb centromeric to HLA-E, in the same transcriptional orientation. GNL1 is telomeric to HLA-B and HLA-C. [provided by RefSeq].
Molecular Weight:	68661
Gene ID:	2794
NCBI Accession:	NP_005266
UniProt:	P36915

Application Details

Application Notes:	WB: 1:1000
Restrictions:	For Research Use only

Handling

Format:	Liquid
Buffer:	Purified polyclonal antibody supplied in PBS with 0.09 % (W/V) sodium azide.
Preservative:	Sodium azide
Precaution of Use:	This product contains Sodium azide: a POISONOUS AND HAZARDOUS SUBSTANCE which should be handled by trained staff only.
Storage:	4 °C,-20 °C
Storage Comment:	GNL1 Antibody (Center) can be refrigerated at 2-8 °C for up to 6 months. For long term storage, keep at -20 °C.
Expiry Date:	6 months



Western Blotting

Image 1. GNL1 Antibody (Center) (ABIN1538160 and ABIN2849092) western blot analysis in MCF-7 cell line lysates (35 µg/lane). This demonstrates the GNL1 antibody detected the GNL1 protein (arrow).