

Datasheet for ABIN1538164  
**anti-CCL7 antibody (AA 25-54)**[Go to Product page](#)

## 1 Image

## Overview

Quantity:	400 µL
Target:	CCL7
Binding Specificity:	AA 25-54
Reactivity:	Human
Host:	Rabbit
Clonality:	Polyclonal
Conjugate:	This CCL7 antibody is un-conjugated
Application:	Western Blotting (WB)

## Product Details

Immunogen:	This CCL7 antibody is generated from rabbits immunized with a KLH conjugated synthetic peptide between 25-54 amino acids from the Central region of human CCL7.
Clone:	RB36660
Isotype:	Ig Fraction
Purification:	This antibody is purified through a protein A column, followed by peptide affinity purification.

## Target Details

Target:	CCL7
Alternative Name:	CCL7 ( <a href="#">CCL7 Products</a> )
Background:	This gene encodes monocyte chemotactic protein 3, a secreted chemokine which attracts

## Target Details

macrophages during inflammation and metastasis. It is a member of the C-C subfamily of chemokines which are characterized by having two adjacent cysteine residues. The protein is an in vivo substrate of matrix metalloproteinase 2, an enzyme which degrades components of the extracellular matrix. This gene is part of a cluster of C-C chemokine family members on chromosome 17q.

Molecular Weight: 11200

Gene ID: 6354

NCBI Accession: [NP\\_006264](#)

UniProt: [P80098](#)

## Application Details

Application Notes: WB: 1:1000

Restrictions: For Research Use only

## Handling

Format: Liquid

Buffer: Purified polyclonal antibody supplied in PBS with 0.09 % (W/V) sodium azide.

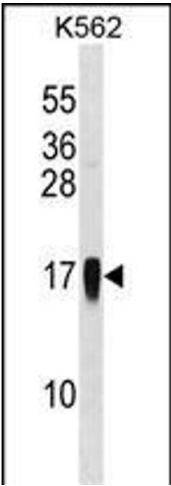
Preservative: Sodium azide

Precaution of Use: This product contains Sodium azide: a POISONOUS AND HAZARDOUS SUBSTANCE which should be handled by trained staff only.

Storage: 4 °C,-20 °C

Storage Comment: CCL7 Antibody (Center) can be refrigerated at 2-8 °C for up to 6 months. For long term storage, keep at -20 °C.

Expiry Date: 6 months



Western Blotting

**Image 1.** CCL7 Antibody (Center) (ABIN1538164 and ABIN2848537) western blot analysis in K562 cell line lysates (35 µg/lane). This demonstrates the CCL7 antibody detected the CCL7 protein (arrow).