

Datasheet for ABIN1538170  
**anti-RIC8A antibody (AA 244-272)**[Go to Product page](#)

## 1 Image

## Overview

Quantity:	400 µL
Target:	RIC8A
Binding Specificity:	AA 244-272
Reactivity:	Human
Host:	Rabbit
Clonality:	Polyclonal
Conjugate:	This RIC8A antibody is un-conjugated
Application:	Western Blotting (WB)

## Product Details

Immunogen:	This RIC8A antibody is generated from rabbits immunized with a KLH conjugated synthetic peptide between 244-272 amino acids from the Central region of human RIC8A.
Clone:	RB37066
Isotype:	Ig Fraction
Predicted Reactivity:	Pr
Purification:	This antibody is purified through a protein A column, followed by peptide affinity purification.

## Target Details

Target:	RIC8A
Alternative Name:	RIC8A ( <a href="#">RIC8A Products</a> )

## Target Details

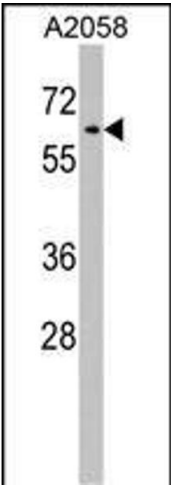
Background:	Guanine nucleotide exchange factor (GEF), which can activate some, but not all, G-alpha proteins. Able to activate GNAI1, GNAO1 and GNAQ, but not GNAS by exchanging bound GDP for free GTP. Involved in regulation of microtubule pulling forces during mitotic movement of chromosomes by stimulating G(i)-alpha protein, possibly leading to release G(i)-alpha-GTP and NuMA proteins from the NuMA-GPSM2-G(i)-alpha-GDP complex (By similarity). Also acts as an activator for G(q)-alpha (GNAQ) protein by enhancing the G(q)-coupled receptor-mediated ERK activation.
Molecular Weight:	59710
Gene ID:	60626
NCBI Accession:	<a href="#">NP_068751</a>
UniProt:	<a href="#">Q9NPQ8</a>
Pathways:	<a href="#">Regulation of G-Protein Coupled Receptor Protein Signaling</a> , <a href="#">Feeding Behaviour</a> , <a href="#">Asymmetric Protein Localization</a>

## Application Details

Application Notes:	WB: 1:1000
Restrictions:	For Research Use only

## Handling

Format:	Liquid
Buffer:	Purified polyclonal antibody supplied in PBS with 0.09 % (W/V) sodium azide.
Preservative:	Sodium azide
Precaution of Use:	This product contains Sodium azide: a POISONOUS AND HAZARDOUS SUBSTANCE which should be handled by trained staff only.
Storage:	4 °C, -20 °C
Storage Comment:	RIC8A Antibody (Center) can be refrigerated at 2-8 °C for up to 6 months. For long term storage, keep at -20 °C.
Expiry Date:	6 months



Western Blotting

**Image 1.** RIC8A Antibody (Center) (ABIN1538170 and ABIN2848752) western blot analysis in cell line lysates (35 µg/lane). This demonstrates the RIC8A antibody detected the RIC8A protein (arrow).