

Datasheet for ABIN1538172  
**anti-SNTB1 antibody (AA 243-271)**[Go to Product page](#)

## 2 Images

## Overview

Quantity:	400 µL
Target:	SNTB1
Binding Specificity:	AA 243-271
Reactivity:	Mouse, Human
Host:	Rabbit
Clonality:	Polyclonal
Conjugate:	This SNTB1 antibody is un-conjugated
Application:	Western Blotting (WB)

## Product Details

Immunogen:	This SNTB1 antibody is generated from rabbits immunized with a KLH conjugated synthetic peptide between 243-271 amino acids from the Central region of human SNTB1.
Clone:	RB36711
Isotype:	Ig Fraction
Purification:	This antibody is purified through a protein A column, followed by peptide affinity purification.

## Target Details

Target:	SNTB1
Alternative Name:	SNTB1 ( <a href="#">SNTB1 Products</a> )
Background:	Dystrophin is a large, rod-like cytoskeletal protein found at the inner surface of muscle fibers.

## Target Details

Dystrophin is missing in Duchenne Muscular Dystrophy patients and is present in reduced amounts in Becker Muscular Dystrophy patients. The protein encoded by this gene is a peripheral membrane protein found associated with dystrophin and dystrophin-related proteins. This gene is a member of the syntrophin gene family, which contains at least two other structurally-related genes.

Molecular Weight: 58061

Gene ID: 6641

NCBI Accession: [NP\\_066301](#)

UniProt: [Q13884](#)

## Application Details

Application Notes: WB: 1:1000. WB: 1:1000

Restrictions: For Research Use only

## Handling

Format: Liquid

Buffer: Purified polyclonal antibody supplied in PBS with 0.09 % (W/V) sodium azide.

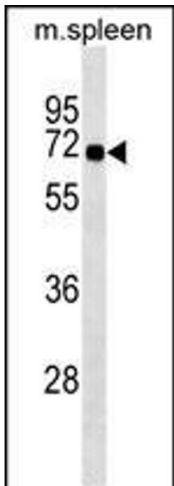
Preservative: Sodium azide

Precaution of Use: This product contains Sodium azide: a POISONOUS AND HAZARDOUS SUBSTANCE which should be handled by trained staff only.

Storage: 4 °C,-20 °C

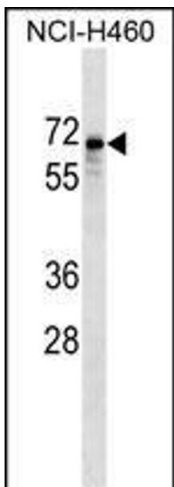
Storage Comment: SNTB1 Antibody (Center) can be refrigerated at 2-8 °C for up to 6 months. For long term storage, keep at -20 °C.

Expiry Date: 6 months



Western Blotting

**Image 1.** SNTB1 Antibody (Center) (ABIN1538172 and ABIN2849234) western blot analysis in mouse spleen tissue lysates (35 µg/lane). This demonstrates the SNTB1 antibody detected the SNTB1 protein (arrow).



Western Blotting

**Image 2.** SNTB1 Antibody (Center) (ABIN1538172 and ABIN2849234) western blot analysis in NCI- cell line lysates (35 µg/lane). This demonstrates the SNTB1 antibody detected the SNTB1 protein (arrow).