

Datasheet for ABIN1538173
anti-Thymopoietin antibody (AA 243-269)[Go to Product page](#)

1 Image

Overview

Quantity:	400 µL
Target:	Thymopoietin (TMPO)
Binding Specificity:	AA 243-269
Reactivity:	Human
Host:	Rabbit
Clonality:	Polyclonal
Conjugate:	This Thymopoietin antibody is un-conjugated
Application:	Western Blotting (WB)

Product Details

Immunogen:	This TMPO antibody is generated from rabbits immunized with a KLH conjugated synthetic peptide between 243-269 amino acids from the Central region of human TMPO.
Clone:	RB39917
Isotype:	Ig Fraction
Purification:	This antibody is purified through a protein A column, followed by peptide affinity purification.

Target Details

Target:	Thymopoietin (TMPO)
Alternative Name:	TMPO (TMPO Products)
Background:	The protein encoded by this gene resides in the nucleus and may play a role in the assembly of

Target Details

the nuclear lamina, and thus help maintain the structural organization of the nuclear envelope. It may function as a receptor for the attachment of lamin filaments to the inner nuclear membrane. Mutations in this gene are associated with dilated cardiomyopathy. Alternatively spliced transcript variants encoding different isoforms have been noted for this gene.

Molecular Weight: 50670

Gene ID: 7112

NCBI Accession: [NP_001027454](#), [NP_001027455](#)

UniProt: [P42167](#)

Application Details

Application Notes: WB: 1:1000

Restrictions: For Research Use only

Handling

Format: Liquid

Buffer: Purified polyclonal antibody supplied in PBS with 0.09 % (W/V) sodium azide.

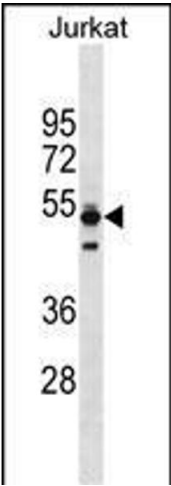
Preservative: Sodium azide

Precaution of Use: This product contains Sodium azide: a POISONOUS AND HAZARDOUS SUBSTANCE which should be handled by trained staff only.

Storage: 4 °C, -20 °C

Storage Comment: TMPO Antibody (Center) can be refrigerated at 2-8 °C for up to 6 months. For long term storage, keep at -20 °C.

Expiry Date: 6 months



Western Blotting

Image 1. TO Antibody (Center) (ABIN1538173 and ABIN2838131) western blot analysis in Jurkat cell line lysates (35 µg/lane). This demonstrates the TO antibody detected the TO protein (arrow).