

Datasheet for ABIN1538179  
**anti-MARCH10 antibody (AA 248-274)**[Go to Product page](#)

## 1 Image

## Overview

Quantity:	400 µL
Target:	MARCH10
Binding Specificity:	AA 248-274
Reactivity:	Human
Host:	Rabbit
Clonality:	Polyclonal
Conjugate:	This MARCH10 antibody is un-conjugated
Application:	Western Blotting (WB)

## Product Details

Immunogen:	This MARCH10 antibody is generated from rabbits immunized with a KLH conjugated synthetic peptide between 248-274 amino acids from the Central region of human MARCH10.
Clone:	RB37812
Isotype:	Ig Fraction
Purification:	This antibody is purified through a protein A column, followed by peptide affinity purification.

## Target Details

Target:	MARCH10
Alternative Name:	MARCH10 ( <a href="#">MARCH10 Products</a> )
Background:	MARCH10 is a member of the MARCH family of membrane-bound E3 ubiquitin ligases (EC

## Target Details

6.3.2.19). MARCH enzymes add ubiquitin (see MIM 191339) to target lysines in substrate proteins, thereby signaling their vesicular transport between membrane compartments (Morokuma et al., 2007 [PubMed 17604280]).

Molecular Weight: 90511

Gene ID: 162333

NCBI Accession: [NP\\_001094345](#), [NP\\_689811](#)

UniProt: [Q8NA82](#)

## Application Details

Application Notes: WB: 1:1000

Restrictions: For Research Use only

## Handling

Format: Liquid

Buffer: Purified polyclonal antibody supplied in PBS with 0.09 % (W/V) sodium azide.

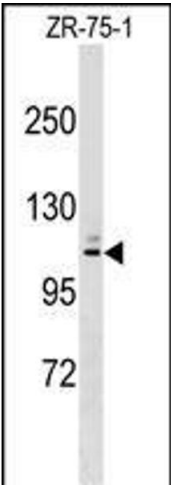
Preservative: Sodium azide

Precaution of Use: This product contains Sodium azide: a POISONOUS AND HAZARDOUS SUBSTANCE which should be handled by trained staff only.

Storage: 4 °C, -20 °C

Storage Comment: MARCH10 Antibody (Center) can be refrigerated at 2-8 °C for up to 6 months. For long term storage, keep at -20 °C.

Expiry Date: 6 months



Western Blotting

**Image 1.** RCH10 Antibody (Center) (ABIN1538179 and ABIN2849108) western blot analysis in ZR-75-1 cell line lysates (35 µg/lane). This demonstrates the RCH10 antibody detected the RCH10 protein (arrow).