



Datasheet for ABIN1538181
anti-ARHGEF35 antibody (AA 248-275)



[Go to Product page](#)

1 Image

Overview

Quantity:	400 µL
Target:	ARHGEF35
Binding Specificity:	AA 248-275
Reactivity:	Human
Host:	Rabbit
Clonality:	Polyclonal
Conjugate:	This ARHGEF35 antibody is un-conjugated
Application:	Western Blotting (WB)

Product Details

Immunogen:	This ARHGEF35 antibody is generated from rabbits immunized with a KLH conjugated synthetic peptide between 248-275 amino acids from the Central region of human ARHGEF35.
Clone:	RB38691
Isotype:	Ig Fraction
Purification:	This antibody is purified through a protein A column, followed by peptide affinity purification.

Target Details

Target:	ARHGEF35
Alternative Name:	ARHGEF35 (ARHGEF35 Products)
Background:	The function of this protein remains unknown.

Target Details

Molecular Weight:	53287
Gene ID:	445328
NCBI Accession:	NP_001003702
UniProt:	A5YM69

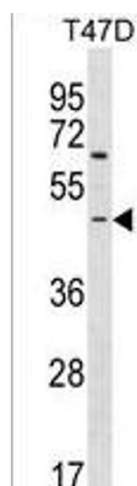
Application Details

Application Notes:	WB: 1:1000
Restrictions:	For Research Use only

Handling

Format:	Liquid
Buffer:	Purified polyclonal antibody supplied in PBS with 0.09 % (W/V) sodium azide.
Preservative:	Sodium azide
Precaution of Use:	This product contains Sodium azide: a POISONOUS AND HAZARDOUS SUBSTANCE which should be handled by trained staff only.
Storage:	4 °C,-20 °C
Storage Comment:	ARHGEF35 Antibody (Center) can be refrigerated at 2-8 °C for up to 6 months. For long term storage, keep at -20 °C.
Expiry Date:	6 months

Images



Western Blotting

Image 1. ARHGEF35 Antibody (Center) (ABIN1538181 and ABIN2850203) western blot analysis in T47D cell line lysates (35 µg/lane). This demonstrates the ARHGEF35 antibody detected the ARHGEF35 protein (arrow).