



[Go to Product page](#)

Datasheet for ABIN1538187
anti-FRMD3 antibody (AA 250-279)

1 Image

Overview

Quantity:	400 µL
Target:	FRMD3
Binding Specificity:	AA 250-279
Reactivity:	Human
Host:	Rabbit
Clonality:	Polyclonal
Application:	Western Blotting (WB)

Product Details

Immunogen:	This FRMD3 antibody is generated from rabbits immunized with a KLH conjugated synthetic peptide between 250-279 amino acids from the Central region of human FRMD3.
Clone:	RB38459
Isotype:	Ig Fraction
Purification:	This antibody is purified through a protein A column, followed by peptide affinity purification.

Target Details

Target:	FRMD3
Alternative Name:	FRMD3 (FRMD3 Products)
Background:	Protein 4.1 of red blood cells, or 4.1R (EPB41, MIM 130500), is a multifunctional protein essential for maintaining erythrocyte shape and membrane mechanical properties. The protein 4.1 family comprises a group of structural proteins that includes, in addition to 4.1R, 4.1G

Target Details

(general type, MIM 603237), 4.1B (brain type, MIM 605331), 4.1N (neuron type, MIM 602879), and 4.1O (ovary type).

Molecular Weight: 68772

Gene ID: 257019

NCBI Accession: [NP_001231888](#), [NP_001231889](#), [NP_001231890](#), [NP_001231891](#), [NP_777598](#)

UniProt: [A2A2Y4](#)

Application Details

Application Notes: WB: 1:1000

Restrictions: For Research Use only

Handling

Format: Liquid

Buffer: Purified polyclonal antibody supplied in PBS with 0.09 % (W/V) sodium azide.

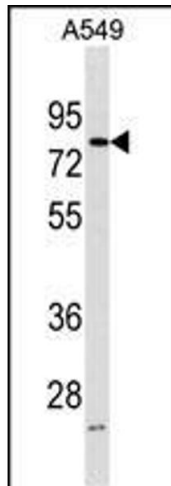
Preservative: Sodium azide

Precaution of Use: This product contains Sodium azide: a POISONOUS AND HAZARDOUS SUBSTANCE which should be handled by trained staff only.

Storage: 4 °C, -20 °C

Storage Comment: FRMD3 Antibody (Center) can be refrigerated at 2-8 °C for up to 6 months. For long term storage, keep at -20 °C.

Expiry Date: 6 months



Western Blotting

Image 1. FRMD3 Antibody (Center) (ABIN1538187 and ABIN2850005) western blot analysis in A549 cell line lysates (35 µg/lane). This demonstrates the FRMD3 antibody detected the FRMD3 protein (arrow).