

Datasheet for ABIN1538189
anti-LBH antibody (AA 26-53)[Go to Product page](#)

1 Image

Overview

Quantity:	400 µL
Target:	LBH
Binding Specificity:	AA 26-53
Reactivity:	Human
Host:	Rabbit
Clonality:	Polyclonal
Conjugate:	This LBH antibody is un-conjugated
Application:	Western Blotting (WB)

Product Details

Immunogen:	This LBH antibody is generated from rabbits immunized with a KLH conjugated synthetic peptide between 26-53 amino acids from the Central region of human LBH.
Clone:	RB23625
Isotype:	Ig Fraction
Predicted Reactivity:	B, M
Purification:	This antibody is purified through a protein A column, followed by peptide affinity purification.

Target Details

Target:	LBH
Alternative Name:	LBH (LBH Products)

Target Details

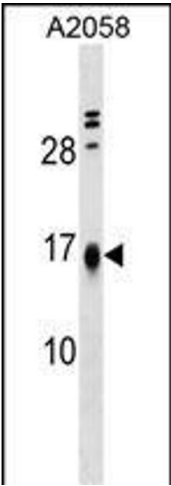
Background:	Transcriptional activator which may act in mitogen-activated protein kinase signaling pathway.
Molecular Weight:	12217
Gene ID:	81606
NCBI Accession:	NP_112177
UniProt:	Q53QV2

Application Details

Application Notes:	WB: 1:1000
Restrictions:	For Research Use only

Handling

Format:	Liquid
Buffer:	Purified polyclonal antibody supplied in PBS with 0.09 % (W/V) sodium azide.
Preservative:	Sodium azide
Precaution of Use:	This product contains Sodium azide: a POISONOUS AND HAZARDOUS SUBSTANCE which should be handled by trained staff only.
Storage:	4 °C,-20 °C
Storage Comment:	LBH Antibody (Center) can be refrigerated at 2-8 °C for up to 6 months. For long term storage, keep at -20 °C.
Expiry Date:	6 months



Western Blotting

Image 1. LBH Antibody (Center) (ABIN1538189 and ABIN2849505) western blot analysis in cell line lysates (35 µg/lane). This demonstrates the LBH antibody detected the LBH protein (arrow).