



[Go to Product page](#)

Datasheet for ABIN1538191
anti-PDE6D antibody (AA 26-55)

2 Images

Overview

Quantity:	400 µL
Target:	PDE6D
Binding Specificity:	AA 26-55
Reactivity:	Human, Mouse
Host:	Rabbit
Clonality:	Polyclonal
Conjugate:	This PDE6D antibody is un-conjugated
Application:	Western Blotting (WB)

Product Details

Immunogen:	This PDE6D antibody is generated from rabbits immunized with a KLH conjugated synthetic peptide between 26-55 amino acids from the Central region of human PDE6D.
Clone:	RB30371
Isotype:	Ig Fraction
Predicted Reactivity:	B
Purification:	This antibody is purified through a protein A column, followed by peptide affinity purification.

Target Details

Target:	PDE6D
Alternative Name:	PDE6D (PDE6D Products)

Target Details

Background: Acts as a GTP specific dissociation inhibitor (GDI). Increases the affinity of ARL3 for GTP by several orders of magnitude and does so by decreasing the nucleotide dissociation rate. Stabilizes Arl3-GTP by decreasing the nucleotide dissociation.

Molecular Weight: 17420

Gene ID: 5147

NCBI Accession: [NP_002592](#)

UniProt: [O43924](#)

Application Details

Application Notes: WB: 1:1000. WB: 1:1000

Restrictions: For Research Use only

Handling

Format: Liquid

Buffer: Purified polyclonal antibody supplied in PBS with 0.09 % (W/V) sodium azide.

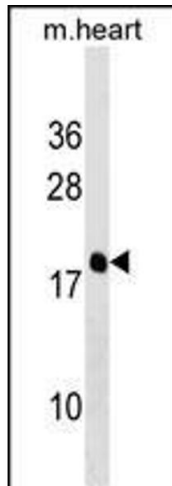
Preservative: Sodium azide

Precaution of Use: This product contains Sodium azide: a POISONOUS AND HAZARDOUS SUBSTANCE which should be handled by trained staff only.

Storage: 4 °C, -20 °C

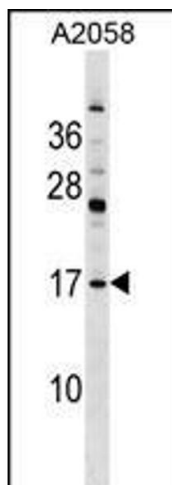
Storage Comment: PDE6D Antibody (Center) can be refrigerated at 2-8 °C for up to 6 months. For long term storage, keep at -20 °C.

Expiry Date: 6 months



Western Blotting

Image 1. PDE6D Antibody (Center) (ABIN1538191 and ABIN2849005) western blot analysis in mouse heart tissue lysates (35 μ g/lane). This demonstrates the PDE6D antibody detected the PDE6D protein (arrow).



Western Blotting

Image 2. PDE6D Antibody (Center) (ABIN1538191 and ABIN2849005) western blot analysis in cell line lysates (35 μ g/lane). This demonstrates the PDE6D antibody detected the PDE6D protein (arrow).