

Datasheet for ABIN1538197
anti-ALG2 antibody (AA 254-282)[Go to Product page](#)

1 Image

Overview

Quantity:	400 µL
Target:	ALG2
Binding Specificity:	AA 254-282
Reactivity:	Human
Host:	Rabbit
Clonality:	Polyclonal
Conjugate:	This ALG2 antibody is un-conjugated
Application:	Western Blotting (WB)

Product Details

Immunogen:	This ALG2 antibody is generated from rabbits immunized with a KLH conjugated synthetic peptide between 254-282 amino acids from the Central region of human ALG2.
Clone:	RB36980
Isotype:	Ig Fraction
Purification:	This antibody is purified through a protein A column, followed by peptide affinity purification.

Target Details

Target:	ALG2
Alternative Name:	ALG2 (ALG2 Products)
Background:	This gene encodes a member of the glycosyltransferase 1 family. The encoded protein acts as

Target Details

an alpha 1,3 mannosyltransferase, mannosylating Man(2)GlcNAc(2)-dolichol diphosphate and Man(1)GlcNAc(2)-dolichol diphosphate to form Man(3)GlcNAc(2)-dolichol diphosphate. Defects in this gene have been associated with congenital disorder of glycosylation type 1h (CDG-1h). Alternative splicing results in multiple transcript variants.

Molecular Weight: 47092

Gene ID: 85365

NCBI Accession: [NP_149078](#)

UniProt: [Q9H553](#)

Application Details

Application Notes: WB: 1:1000

Restrictions: For Research Use only

Handling

Format: Liquid

Buffer: Purified polyclonal antibody supplied in PBS with 0.09 % (W/V) sodium azide.

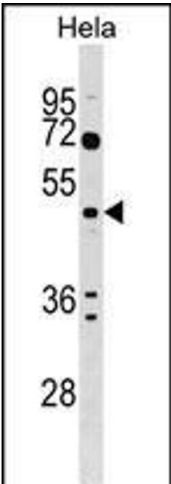
Preservative: Sodium azide

Precaution of Use: This product contains Sodium azide: a POISONOUS AND HAZARDOUS SUBSTANCE which should be handled by trained staff only.

Storage: 4 °C, -20 °C

Storage Comment: ALG2 Antibody (Center) can be refrigerated at 2-8 °C for up to 6 months. For long term storage, keep at -20 °C.

Expiry Date: 6 months



Western Blotting

Image 1. ALG2 Antibody (Center) (ABIN1538197 and ABIN2848872) western blot analysis in HeLa cell line lysates (35 µg/lane). This demonstrates the ALG2 antibody detected the ALG2 protein (arrow).