



[Go to Product page](#)

Datasheet for ABIN1538198
anti-CRLF1 antibody (AA 255-283)

1 Image

Overview

Quantity:	400 µL
Target:	CRLF1
Binding Specificity:	AA 255-283
Reactivity:	Human
Host:	Rabbit
Clonality:	Polyclonal
Conjugate:	This CRLF1 antibody is un-conjugated
Application:	Western Blotting (WB)

Product Details

Immunogen:	This CRLF1 antibody is generated from rabbits immunized with a KLH conjugated synthetic peptide between 255-283 amino acids from the Central region of human CRLF1.
Clone:	RB36911
Isotype:	Ig Fraction
Predicted Reactivity:	M
Purification:	This antibody is purified through a protein A column, followed by peptide affinity purification.

Target Details

Target:	CRLF1
Alternative Name:	CRLF1 (CRLF1 Products)

Target Details

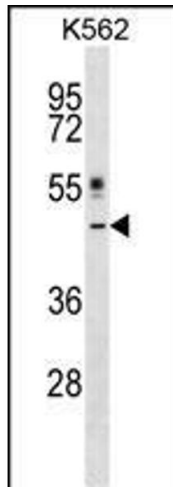
Background:	This gene encodes a member of the cytokine type I receptor family. The protein forms a secreted complex with cardiotrophin-like cytokine factor 1 and acts on cells expressing ciliary neurotrophic factor receptors. The complex can promote survival of neuronal cells. Mutations in this gene result in Crisponi syndrome and cold-induced sweating syndrome. [provided by RefSeq].
Molecular Weight:	46302
Gene ID:	9244
NCBI Accession:	NP_004741
UniProt:	O75462

Application Details

Application Notes:	WB: 1:1000
Restrictions:	For Research Use only

Handling

Format:	Liquid
Buffer:	Purified polyclonal antibody supplied in PBS with 0.09 % (W/V) sodium azide.
Preservative:	Sodium azide
Precaution of Use:	This product contains Sodium azide: a POISONOUS AND HAZARDOUS SUBSTANCE which should be handled by trained staff only.
Storage:	4 °C,-20 °C
Storage Comment:	CRLF1 Antibody (Center) can be refrigerated at 2-8 °C for up to 6 months. For long term storage, keep at -20 °C.
Expiry Date:	6 months



Western Blotting

Image 1. CRLF1 Antibody (Center) (ABIN1538198 and ABIN2848707) western blot analysis in K562 cell line lysates (35 µg/lane). This demonstrates the CRLF1 antibody detected the CRLF1 protein (arrow).