

Datasheet for ABIN1538207
**anti-Collagen, Type XXVI, alpha 1 (COL26A1) (AA 261-290)
antibody**



[Go to Product page](#)

1 Image

Overview

Quantity:	400 µL
Target:	Collagen, Type XXVI, alpha 1 (COL26A1)
Binding Specificity:	AA 261-290
Reactivity:	Human
Host:	Rabbit
Clonality:	Polyclonal
Conjugate:	Un-conjugated
Application:	Western Blotting (WB)

Product Details

Immunogen:	This EMID2 antibody is generated from rabbits immunized with a KLH conjugated synthetic peptide between 261-290 amino acids from the Central region of human EMID2.
Clone:	RB37856
Isotype:	Ig Fraction
Purification:	This antibody is purified through a protein A column, followed by peptide affinity purification.

Target Details

Target:	Collagen, Type XXVI, alpha 1 (COL26A1)
Alternative Name:	EMID2 (COL26A1 Products)
Background:	EMID2 contains 1 EMI domain and 2 collagen-like domains.

Target Details

Molecular Weight:	45381
Gene ID:	136227
NCBI Accession:	NP_001265492 , NP_597714
UniProt:	Q96A83

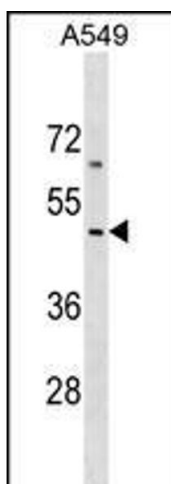
Application Details

Application Notes:	WB: 1:1000
Restrictions:	For Research Use only

Handling

Format:	Liquid
Buffer:	Purified polyclonal antibody supplied in PBS with 0.09 % (W/V) sodium azide.
Preservative:	Sodium azide
Precaution of Use:	This product contains Sodium azide: a POISONOUS AND HAZARDOUS SUBSTANCE which should be handled by trained staff only.
Storage:	4 °C, -20 °C
Storage Comment:	EMID2 Antibody (Center) can be refrigerated at 2-8 °C for up to 6 months. For long term storage, keep at -20 °C.
Expiry Date:	6 months

Images



Western Blotting

Image 1. EMID2 Antibody (Center) (ABIN1538207 and ABIN2849215) western blot analysis in A549 cell line lysates (35 µg/lane). This demonstrates the EMID2 antibody detected the EMID2 protein (arrow).