

Datasheet for ABIN1538208
anti-LMBR1 antibody (AA 262-290)[Go to Product page](#)

1 Image

Overview

Quantity:	400 µL
Target:	LMBR1
Binding Specificity:	AA 262-290
Reactivity:	Human
Host:	Rabbit
Clonality:	Polyclonal
Conjugate:	This LMBR1 antibody is un-conjugated
Application:	Western Blotting (WB)

Product Details

Immunogen:	This LMBR1 antibody is generated from rabbits immunized with a KLH conjugated synthetic peptide between 262-290 amino acids from the Central region of human LMBR1.
Clone:	RB36979
Isotype:	Ig Fraction
Predicted Reactivity:	M
Purification:	This antibody is purified through a protein A column, followed by peptide affinity purification.

Target Details

Target:	LMBR1
Alternative Name:	LMBR1 (LMBR1 Products)

Target Details

Background: This gene encodes a member of the LMBR1-like membrane protein family. Another member of this protein family has been shown to be a lipocalin transmembrane receptor. A highly conserved, cis-acting regulatory module for the sonic hedgehog gene is located within an intron of this gene. Consequently, disruption of this genic region can alter sonic hedgehog expression and affect limb patterning, but it is not known if this gene functions directly in limb development. Mutations and chromosomal deletions and rearrangements in this genic region are associated with acheiropody and preaxial polydactyly, which likely result from altered sonic hedgehog expression.

Molecular Weight: 55098

Gene ID: 64327

NCBI Accession: [NP_071903](#)

UniProt: [Q8WVP7](#)

Application Details

Application Notes: WB: 1:1000

Restrictions: For Research Use only

Handling

Format: Liquid

Buffer: Purified polyclonal antibody supplied in PBS with 0.09 % (W/V) sodium azide.

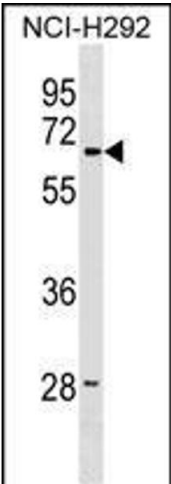
Preservative: Sodium azide

Precaution of Use: This product contains Sodium azide: a POISONOUS AND HAZARDOUS SUBSTANCE which should be handled by trained staff only.

Storage: 4 °C,-20 °C

Storage Comment: LMBR1 Antibody (Center) can be refrigerated at 2-8 °C for up to 6 months. For long term storage, keep at -20 °C.

Expiry Date: 6 months



Western Blotting

Image 1. LMBR1 Antibody (Center) (ABIN1538208 and ABIN2848930) western blot analysis in NCI- cell line lysates (35 µg/lane). This demonstrates the LMBR1 antibody detected the LMBR1 protein (arrow).