



[Go to Product page](#)

Datasheet for ABIN1538214  
**anti-DACH1 antibody (AA 270-297)**

1 Image

Overview

Quantity:	400 µL
Target:	DACH1
Binding Specificity:	AA 270-297
Reactivity:	Human, Mouse
Host:	Rabbit
Clonality:	Polyclonal
Conjugate:	This DACH1 antibody is un-conjugated
Application:	Western Blotting (WB)

Product Details

Immunogen:	This DACH1 antibody is generated from rabbits immunized with a KLH conjugated synthetic peptide between 270-297 amino acids from the Central region of human DACH1.
Clone:	RB36983
Isotype:	Ig Fraction
Purification:	This antibody is purified through a protein A column, followed by peptide affinity purification.

Target Details

Target:	DACH1
Alternative Name:	DACH1 ( <a href="#">DACH1 Products</a> )
Background:	This gene encodes a chromatin-associated protein that associates with other DNA-binding

## Target Details

---

transcription factors to regulate gene expression and cell fate determination during development. The protein contains a Ski domain that is highly conserved from *Drosophila* to human. Expression of this gene is lost in some forms of metastatic cancer, and is correlated with poor prognosis. Multiple transcript variants encoding different isoforms have been found for this gene.

Molecular Weight:	78562
Gene ID:	1602
NCBI Accession:	<a href="#">NP_004383</a> , <a href="#">NP_542937</a> , <a href="#">NP_542938</a>
UniProt:	<a href="#">Q9UI36</a>
Pathways:	<a href="#">Feeding Behaviour</a>

## Application Details

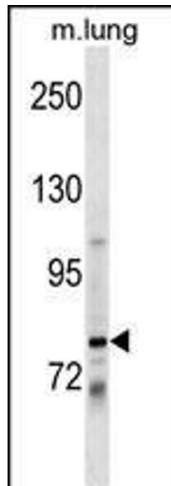
---

Application Notes:	WB: 1:1000
Restrictions:	For Research Use only

## Handling

---

Format:	Liquid
Buffer:	Purified polyclonal antibody supplied in PBS with 0.09 % (W/V) sodium azide.
Preservative:	Sodium azide
Precaution of Use:	This product contains Sodium azide: a POISONOUS AND HAZARDOUS SUBSTANCE which should be handled by trained staff only.
Storage:	4 °C, -20 °C
Storage Comment:	DACH1 Antibody (Center) can be refrigerated at 2-8 °C for up to 6 months. For long term storage, keep at -20 °C.
Expiry Date:	6 months



### Western Blotting

**Image 1.** DACH1 Antibody (Center) (ABIN1538214 and ABIN2849240) western blot analysis in mouse lung tissue lysates (35 µg/lane). This demonstrates the DACH1 antibody detected the DACH1 protein (arrow).