



[Go to Product page](#)

Datasheet for ABIN1538217  
**anti-GLDN antibody (AA 271-299)**

1 Image

Overview

Quantity:	400 µL
Target:	GLDN
Binding Specificity:	AA 271-299
Reactivity:	Human
Host:	Rabbit
Clonality:	Polyclonal
Conjugate:	This GLDN antibody is un-conjugated
Application:	Western Blotting (WB)

Product Details

Immunogen:	This GLDN antibody is generated from rabbits immunized with a KLH conjugated synthetic peptide between 271-299 amino acids from the Central region of human GLDN.
Clone:	RB36176
Isotype:	Ig Fraction
Purification:	This antibody is purified through a protein A column, followed by peptide affinity purification.

Target Details

Target:	GLDN
Alternative Name:	GLDN ( <a href="#">GLDN Products</a> )
Background:	GLDN plays a role in the formation of the nodes of Ranvier along myelinated axons. Probable

## Target Details

---

NRCAM and NFASC/neurofascin ligand which may provide a glial positional clue required for the proper molecular assembly of the nodes of Ranvier (By similarity).

Molecular Weight: 58957

Gene ID: 342035

NCBI Accession: [NP\\_861454](#)

UniProt: [Q6ZMI3](#)

## Application Details

---

Application Notes: WB: 1:1000

Restrictions: For Research Use only

## Handling

---

Format: Liquid

Buffer: Purified polyclonal antibody supplied in PBS with 0.09 % (W/V) sodium azide.

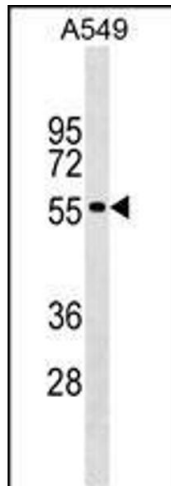
Preservative: Sodium azide

Precaution of Use: This product contains Sodium azide: a POISONOUS AND HAZARDOUS SUBSTANCE which should be handled by trained staff only.

Storage: 4 °C,-20 °C

Storage Comment: GLDN Antibody (Center) can be refrigerated at 2-8 °C for up to 6 months. For long term storage, keep at -20 °C.

Expiry Date: 6 months



### Western Blotting

**Image 1.** GLDN Antibody (Center) (ABIN1538217 and ABIN2849147) western blot analysis in A549 cell line lysates (35 µg/lane). This demonstrates the GLDN antibody detected the GLDN protein (arrow).