

Datasheet for ABIN1538221
anti-TFEB antibody (AA 271-300)[Go to Product page](#)

1 Image

Overview

Quantity:	400 µL
Target:	TFEB
Binding Specificity:	AA 271-300
Reactivity:	Human
Host:	Rabbit
Clonality:	Polyclonal
Conjugate:	This TFEB antibody is un-conjugated
Application:	Western Blotting (WB)

Product Details

Immunogen:	This TFEB antibody is generated from rabbits immunized with a KLH conjugated synthetic peptide between 271-300 amino acids from the Central region of human TFEB.
Clone:	RB39331
Isotype:	Ig Fraction
Predicted Reactivity:	M
Purification:	This antibody is purified through a protein A column, followed by peptide affinity purification.

Target Details

Target:	TFEB
Alternative Name:	TFEB (TFEB Products)

Target Details

Background: Transcription factor that specifically recognizes and binds E-box sequences (3'-CANNTG-5'). Efficient DNA-binding requires dimerization with itself or with another MiT/TFE family member such as TFE3 or MITF. In association with TFE3, activates the expression of CD40L in T-cells, thereby playing a role in T-cell-dependent antibody responses in activated CD4(+) T-cells and thymus-dependent humoral immunity. Specifically recognizes and binds the CLEAR-box sequence (5'-GTCACGTGAC-3') present in the regulatory region of many lysosomal genes, leading to activate their expression. It thereby plays a central role in expression of lysosomal genes. Specifically recognizes the gamma-E3 box, a subset of E-boxes, present in the heavy-chain immunoglobulin enhancer. Plays a role in the signal transduction processes required for normal vascularization of the placenta.

Molecular Weight: 52865

Gene ID: 7942

NCBI Accession: [NP_001161299](#), [NP_001258872](#), [NP_001258873](#), [NP_001258874](#), [NP_009093](#)

UniProt: [P19484](#)

Application Details

Application Notes: WB: 1:1000

Restrictions: For Research Use only

Handling

Format: Liquid

Buffer: Purified polyclonal antibody supplied in PBS with 0.09 % (W/V) sodium azide.

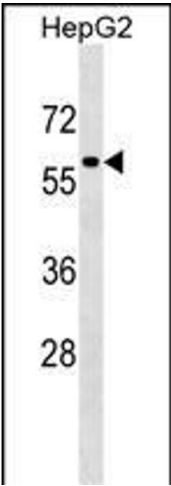
Preservative: Sodium azide

Precaution of Use: This product contains Sodium azide: a POISONOUS AND HAZARDOUS SUBSTANCE which should be handled by trained staff only.

Storage: 4 °C, -20 °C

Storage Comment: TFEB Antibody (Center) can be refrigerated at 2-8 °C for up to 6 months. For long term storage, keep at -20 °C.

Expiry Date: 6 months



Western Blotting

Image 1. TFEB Antibody (Center) (ABIN1538221 and ABIN2850379) western blot analysis in HepG2 cell line lysates (35 µg/lane). This demonstrates the TFEB antibody detected the TFEB protein (arrow).