

Datasheet for ABIN1538232
anti-GPLD1 antibody (AA 278-306)[Go to Product page](#)

1 Image

Overview

Quantity:	400 µL
Target:	GPLD1
Binding Specificity:	AA 278-306
Reactivity:	Human
Host:	Rabbit
Clonality:	Polyclonal
Conjugate:	This GPLD1 antibody is un-conjugated
Application:	Western Blotting (WB)

Product Details

Immunogen:	This GPLD1 antibody is generated from rabbits immunized with a KLH conjugated synthetic peptide between 278-306 amino acids from the Central region of human GPLD1.
Clone:	RB36180
Isotype:	Ig Fraction
Purification:	This antibody is purified through a protein A column, followed by peptide affinity purification.

Target Details

Target:	GPLD1
Alternative Name:	GPLD1 (GPLD1 Products)
Background:	Many proteins are tethered to the extracellular face of eukaryotic plasma membranes by a

Target Details

glycosylphosphatidylinositol (GPI) anchor. The GPI-anchor is a glycolipid found on many blood cells. The protein encoded by this gene is a GPI degrading enzyme.

Glycosylphosphatidylinositol specific phospholipase D1 hydrolyzes the inositol phosphate linkage in proteins anchored by phosphatidylinositol glycans, thereby releasing the attached protein from the plasma membrane.

Molecular Weight: 92336

Gene ID: 2822

NCBI Accession: [NP_001494](#)

UniProt: [P80108](#)

Pathways: [Inositol Metabolic Process](#), [Regulation of Carbohydrate Metabolic Process](#)

Application Details

Application Notes: WB: 1:1000

Restrictions: For Research Use only

Handling

Format: Liquid

Buffer: Purified polyclonal antibody supplied in PBS with 0.09 % (W/V) sodium azide.

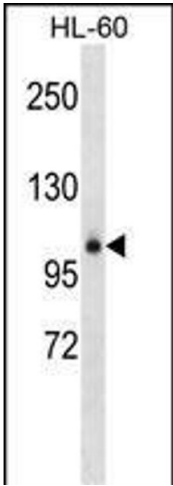
Preservative: Sodium azide

Precaution of Use: This product contains Sodium azide: a POISONOUS AND HAZARDOUS SUBSTANCE which should be handled by trained staff only.

Storage: 4 °C, -20 °C

Storage Comment: GPLD1 Antibody (Center) can be refrigerated at 2-8 °C for up to 6 months. For long term storage, keep at -20 °C.

Expiry Date: 6 months



Western Blotting

Image 1. GPLD1 Antibody (Center) (ABIN1538232 and ABIN2848585) western blot analysis in HL-60 cell line lysates (35 µg/lane). This demonstrates the GPLD1 antibody detected the GPLD1 protein (arrow).