

Datasheet for ABIN1538239
anti-EVI2B antibody (AA 283-313)[Go to Product page](#)

1 Image

Overview

Quantity:	400 µL
Target:	EVI2B
Binding Specificity:	AA 283-313
Reactivity:	Human
Host:	Rabbit
Clonality:	Polyclonal
Conjugate:	This EVI2B antibody is un-conjugated
Application:	Western Blotting (WB)

Product Details

Immunogen:	This EVI2B antibody is generated from rabbits immunized with a KLH conjugated synthetic peptide between 283-313 amino acids from the Central region of human EVI2B.
Clone:	RB37180
Isotype:	Ig Fraction
Purification:	This antibody is purified through a protein A column, followed by peptide affinity purification.

Target Details

Target:	EVI2B
Alternative Name:	EVI2B (EVI2B Products)
Background:	EVI2B (Ecotropic viral integration site 2B) may function as an oncogene in retrovirus-induced

Target Details

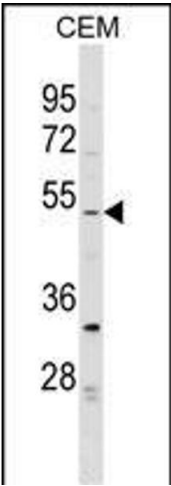
	myeloid tumors and may have a role in leukemogenesis.
Molecular Weight:	48666
Gene ID:	2124
NCBI Accession:	NP_006486
UniProt:	P34910

Application Details

Application Notes:	WB: 1:1000
Restrictions:	For Research Use only

Handling

Format:	Liquid
Buffer:	Purified polyclonal antibody supplied in PBS with 0.09 % (W/V) sodium azide.
Preservative:	Sodium azide
Precaution of Use:	This product contains Sodium azide: a POISONOUS AND HAZARDOUS SUBSTANCE which should be handled by trained staff only.
Storage:	4 °C,-20 °C
Storage Comment:	EVI2B Antibody (Center) can be refrigerated at 2-8 °C for up to 6 months. For long term storage, keep at -20 °C.
Expiry Date:	6 months



Western Blotting

Image 1. EVI2B Antibody (Center) (ABIN1538239 and ABIN2849160) western blot analysis in CEM cell line lysates (35 µg/lane). This demonstrates the EVI2B antibody detected the EVI2B protein (arrow).