



Datasheet for ABIN1538240
anti-PASD1 antibody (AA 283-310)



[Go to Product page](#)

1 Image

Overview

Quantity:	400 µL
Target:	PASD1
Binding Specificity:	AA 283-310
Reactivity:	Human
Host:	Rabbit
Clonality:	Polyclonal
Conjugate:	This PASD1 antibody is un-conjugated
Application:	Western Blotting (WB)

Product Details

Immunogen:	This PASD1 antibody is generated from rabbits immunized with a KLH conjugated synthetic peptide between 283-310 amino acids from the Central region of human PASD1.
Clone:	RB40670
Isotype:	Ig Fraction
Purification:	This antibody is purified through a protein A column, followed by peptide affinity purification.

Target Details

Target:	PASD1
Alternative Name:	PASD1 (PASD1 Products)
Background:	This gene encodes a protein that is thought to function as a transcription factor. The protein is

Target Details

a cancer-associated antigen that can stimulate autologous T-cell responses, and it is therefore considered to be a potential immunotherapeutic target for the treatment of various hematopoietic malignancies, including diffuse large B-cell lymphoma.

Molecular Weight: 87428

Gene ID: 139135

NCBI Accession: [NP_775764](#)

UniProt: [Q8IV76](#)

Application Details

Application Notes: WB: 1:1000

Restrictions: For Research Use only

Handling

Format: Liquid

Buffer: Purified polyclonal antibody supplied in PBS with 0.09 % (W/V) sodium azide.

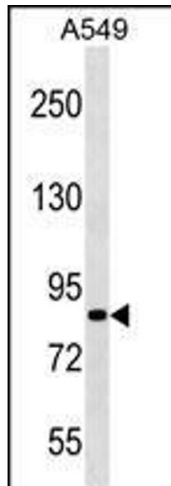
Preservative: Sodium azide

Precaution of Use: This product contains Sodium azide: a POISONOUS AND HAZARDOUS SUBSTANCE which should be handled by trained staff only.

Storage: 4 °C, -20 °C

Storage Comment: PASD1 Antibody (Center) can be refrigerated at 2-8 °C for up to 6 months. For long term storage, keep at -20 °C.

Expiry Date: 6 months



Western Blotting

Image 1. SD1 Antibody (Center) (ABIN1538240 and ABIN2838353) western blot analysis in A549 cell line lysates (35 μ g/lane). This demonstrates the SD1 antibody detected the SD1 protein (arrow).