



Datasheet for ABIN1538244
anti-CLCN3 antibody (AA 285-313)



[Go to Product page](#)

1 Image

Overview

Quantity:	400 µL
Target:	CLCN3
Binding Specificity:	AA 285-313
Reactivity:	Human
Host:	Rabbit
Clonality:	Polyclonal
Conjugate:	This CLCN3 antibody is un-conjugated
Application:	Western Blotting (WB)

Product Details

Immunogen:	This CLCN3 antibody is generated from rabbits immunized with a KLH conjugated synthetic peptide between 285-313 amino acids from the Central region of human CLCN3.
Clone:	RB36260
Isotype:	Ig Fraction
Predicted Reactivity:	M, Rb, Rat
Purification:	This antibody is purified through a protein A column, followed by peptide affinity purification.

Target Details

Target:	CLCN3
Alternative Name:	CLCN3 (CLCN3 Products)

Target Details

Background: CLCN3 mediates the exchange of chloride ions against protons. Functions as antiporter and contributes to the acidification of the endosome and synaptic vesicle lumen, and may thereby affect vesicle trafficking and exocytosis. May play an important role in neuronal cell function through regulation of membrane excitability by protein kinase C. It could help neuronal cells to establish short-term memory.

Molecular Weight: 90966

Gene ID: 1182

NCBI Accession: [NP_001230301](#), [NP_001230303](#), [NP_001820](#), [NP_776297](#)

UniProt: [P51790](#)

Application Details

Application Notes: WB: 1:1000

Restrictions: For Research Use only

Handling

Format: Liquid

Buffer: Purified polyclonal antibody supplied in PBS with 0.09 % (W/V) sodium azide.

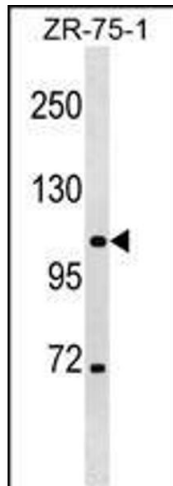
Preservative: Sodium azide

Precaution of Use: This product contains Sodium azide: a POISONOUS AND HAZARDOUS SUBSTANCE which should be handled by trained staff only.

Storage: 4 °C,-20 °C

Storage Comment: CLCN3 Antibody (Center) can be refrigerated at 2-8 °C for up to 6 months. For long term storage, keep at -20 °C.

Expiry Date: 6 months



Western Blotting

Image 1. CLCN3 Antibody (Center) (ABIN1538244 and ABIN2848797) western blot analysis in ZR-75-1 cell line lysates (35 µg/lane). This demonstrates the CLCN3 antibody detected the CLCN3 protein (arrow).