

Datasheet for ABIN1538248
anti-HIRIP3 antibody (AA 287-316)[Go to Product page](#)

1 Image

Overview

Quantity:	400 µL
Target:	HIRIP3
Binding Specificity:	AA 287-316
Reactivity:	Human
Host:	Rabbit
Clonality:	Polyclonal
Conjugate:	This HIRIP3 antibody is un-conjugated
Application:	Western Blotting (WB)

Product Details

Immunogen:	This HIRIP3 antibody is generated from rabbits immunized with a KLH conjugated synthetic peptide between 287-316 amino acids from the Central region of human HIRIP3.
Clone:	RB37326
Isotype:	Ig Fraction
Purification:	This antibody is purified through a protein A column, followed by peptide affinity purification.

Target Details

Target:	HIRIP3
Alternative Name:	HIRIP3 (HIRIP3 Products)
Background:	The HIRA protein shares sequence similarity with Hir1p and Hir2p, the two corepressors of

Target Details

histone gene transcription characterized in the yeast, *Saccharomyces cerevisiae*. The structural features of the HIRA protein suggest that it may function as part of a multiprotein complex. Recently, several cDNAs encoding HIRA-interacting proteins, or HIRIPs, have been identified. In vitro, the HIRIP3 gene product binds HIRA, as well as H2B and H3 core histones, indicating that a complex containing HIRA-HIRIP3 could function in some aspects of chromatin and histone metabolism.

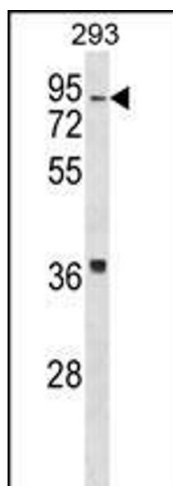
Molecular Weight:	61957
Gene ID:	8479
NCBI Accession:	NP_001184252 , NP_003600
UniProt:	Q9BW71

Application Details

Application Notes:	WB: 1:1000
Restrictions:	For Research Use only

Handling

Format:	Liquid
Buffer:	Purified polyclonal antibody supplied in PBS with 0.09 % (W/V) sodium azide.
Preservative:	Sodium azide
Precaution of Use:	This product contains Sodium azide: a POISONOUS AND HAZARDOUS SUBSTANCE which should be handled by trained staff only.
Storage:	4 °C, -20 °C
Storage Comment:	HIRIP3 Antibody (Center) can be refrigerated at 2-8 °C for up to 6 months. For long term storage, keep at -20 °C.
Expiry Date:	6 months



Western Blotting

Image 1. HIRIP3 Antibody (Center) (ABIN1538248 and ABIN2850055) western blot analysis in 293 cell line lysates (35 µg/lane). This demonstrates the HIRIP3 antibody detected the HIRIP3 protein (arrow).