

Datasheet for ABIN1538252  
**anti-MTF2 antibody (AA 289-317)**[Go to Product page](#)

## 3 Images

## Overview

Quantity:	400 µL
Target:	MTF2
Binding Specificity:	AA 289-317
Reactivity:	Human, Mouse, Rat
Host:	Rabbit
Clonality:	Polyclonal
Conjugate:	This MTF2 antibody is un-conjugated
Application:	Western Blotting (WB)

## Product Details

Immunogen:	This MTF2 antibody is generated from rabbits immunized with a KLH conjugated synthetic peptide between 289-317 amino acids from the Central region of human MTF2.
Clone:	RB38307
Isotype:	Ig Fraction
Purification:	This antibody is purified through a protein A column, followed by peptide affinity purification.

## Target Details

Target:	MTF2
Alternative Name:	MTF2 ( <a href="#">MTF2 Products</a> )
Background:	MTF2 binds to the metal-regulating-element (MRE) of metallothionein-1A gene promoter.

## Target Details

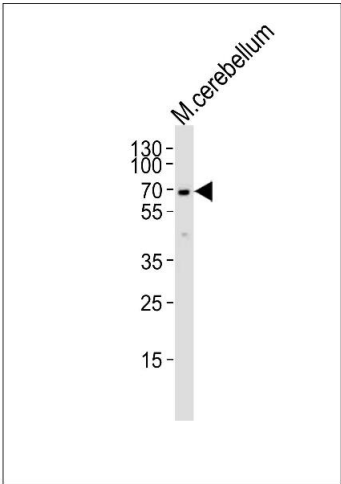
	Binding is zinc-dependent (By similarity).
Molecular Weight:	67090
Gene ID:	22823
NCBI Accession:	<a href="#">NP_001157863</a> , <a href="#">NP_001157865</a> , <a href="#">NP_031384</a>
UniProt:	<a href="#">Q9Y483</a>
Pathways:	<a href="#">Stem Cell Maintenance</a>

## Application Details

Application Notes:	WB: 1:1000. WB: 1:1000. WB: 1:1000
Restrictions:	For Research Use only

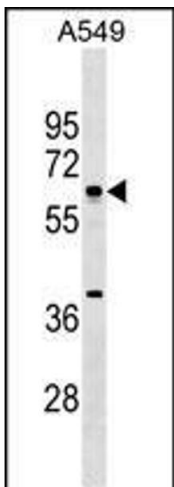
## Handling

Format:	Liquid
Buffer:	Purified polyclonal antibody supplied in PBS with 0.09 % (W/V) sodium azide.
Preservative:	Sodium azide
Precaution of Use:	This product contains Sodium azide: a POISONOUS AND HAZARDOUS SUBSTANCE which should be handled by trained staff only.
Storage:	4 °C,-20 °C
Storage Comment:	MTF2 Antibody (Center) can be refrigerated at 2-8 °C for up to 6 months. For long term storage, keep at -20 °C.
Expiry Date:	6 months



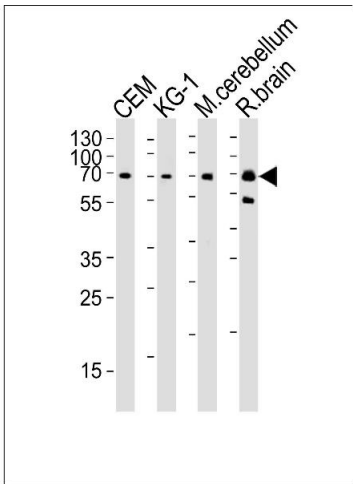
#### Western Blotting

**Image 1.** Western blot analysis of lysate from mouse cerebellum tissue lysate, using MTF2 Antibody (Center) (ABIN1538252 and ABIN2849778). (ABIN1538252 and ABIN2849778) was diluted at 1:1000. A goat anti-rabbit IgG H&L(HRP) at 1:10000 dilution was used as the secondary antibody. Lysate at 35 µg.



#### Western Blotting

**Image 2.** MTF2 Antibody (Center) (ABIN1538252 and ABIN2849778) western blot analysis in A549 cell line lysates (35 µg/lane). This demonstrates the MTF2 antibody detected the MTF2 protein (arrow).



#### Western Blotting

**Image 3.** Western blot analysis of lysates from CEM, KG-1 cell line, mouse cerebellum and rat brain tissue lysate (from left to right), using MTF2 Antibody (Center) (ABIN1538252 and ABIN2849778). (ABIN1538252 and ABIN2849778) was diluted at 1:1000 at each lane. A goat anti-rabbit IgG H&L(HRP) at 1:10000 dilution was used as the secondary antibody. Lysates at 35 µg per lane.