

Datasheet for ABIN1538264  
**anti-ARCN1 antibody (AA 296-324)**[Go to Product page](#)

## 1 Image

## Overview

Quantity:	400 µL
Target:	ARCN1
Binding Specificity:	AA 296-324
Reactivity:	Human
Host:	Rabbit
Clonality:	Polyclonal
Application:	Western Blotting (WB)

## Product Details

Immunogen:	This ARCN1 antibody is generated from rabbits immunized with a KLH conjugated synthetic peptide between 296-324 amino acids from the Central region of human ARCN1.
Clone:	RB30411
Isotype:	Ig Fraction
Predicted Reactivity:	B, M, Rat
Purification:	This antibody is purified through a protein A column, followed by peptide affinity purification.

## Target Details

Target:	ARCN1
Alternative Name:	ARCN1 ( <a href="#">ARCN1 Products</a> )
Background:	This gene maps in a region, which include the mixed lineage leukemia and Friend leukemia

## Target Details

virus integration 1 genes, where multiple disease-associated chromosome translocations occur. It is an intracellular protein. Archain sequences are well conserved among eukaryotes and this protein may play a fundamental role in eukaryotic cell biology. It has similarities to heat shock proteins and clathrin-associated proteins, and may be involved in vesicle structure or trafficking.

Molecular Weight: 57210

Gene ID: 372

NCBI Accession: [NP\\_001135753](#), [NP\\_001646](#)

UniProt: [P48444](#)

## Application Details

Application Notes: WB: 1:1000

Restrictions: For Research Use only

## Handling

Format: Liquid

Buffer: Purified polyclonal antibody supplied in PBS with 0.09 % (W/V) sodium azide.

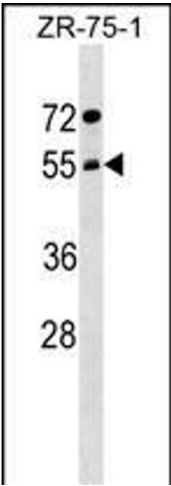
Preservative: Sodium azide

Precaution of Use: This product contains Sodium azide: a POISONOUS AND HAZARDOUS SUBSTANCE which should be handled by trained staff only.

Storage: 4 °C, -20 °C

Storage Comment: ARCN1 Antibody (Center) can be refrigerated at 2-8 °C for up to 6 months. For long term storage, keep at -20 °C.

Expiry Date: 6 months



Western Blotting

**Image 1.** ARC1 Antibody (Center) (ABIN1538264 and ABIN2849231) western blot analysis in ZR-75-1 cell line lysates (35 µg/lane). This demonstrates the ARC1 antibody detected the ARC1 protein (arrow).