

Datasheet for ABIN1538265  
**anti-GABPB2 antibody (AA 297-323)**[Go to Product page](#)

## 1 Image

## Overview

Quantity:	400 µL
Target:	GABPB2
Binding Specificity:	AA 297-323
Reactivity:	Human
Host:	Rabbit
Clonality:	Polyclonal
Conjugate:	This GABPB2 antibody is un-conjugated
Application:	Western Blotting (WB)

## Product Details

Immunogen:	This GABPB2 antibody is generated from rabbits immunized with a KLH conjugated synthetic peptide between 297-323 amino acids from the Central region of human GABPB2.
Clone:	RB37923
Isotype:	Ig Fraction
Purification:	This antibody is purified through a protein A column, followed by peptide affinity purification.

## Target Details

Target:	GABPB2
Alternative Name:	GABPB2 ( <a href="#">GABPB2 Products</a> )
Background:	GABPB2 may function as transcription factor capable of interacting with purine rich repeats (GA

## Target Details

repeats) (By similarity).

Gene ID: 126626

NCBI Accession: [NP\\_653219](#)

UniProt: [Q8TAK5](#)

## Application Details

Application Notes: WB: 1:1000

Restrictions: For Research Use only

## Handling

Format: Liquid

Buffer: Purified polyclonal antibody supplied in PBS with 0.09 % (W/V) sodium azide.

Preservative: Sodium azide

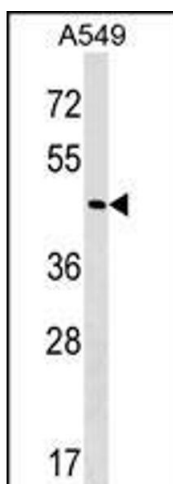
Precaution of Use: This product contains Sodium azide: a POISONOUS AND HAZARDOUS SUBSTANCE which should be handled by trained staff only.

Storage: 4 °C, -20 °C

Storage Comment: GABPB2 Antibody (Center) can be refrigerated at 2-8 °C for up to 6 months. For long term storage, keep at -20 °C.

Expiry Date: 6 months

## Images



### Western Blotting

**Image 1.** GABPB2 Antibody (Center) (ABIN1538265 and ABIN2849134) western blot analysis in A549 cell line lysates (35 µg/lane). This demonstrates the GABPB2 antibody detected the GABPB2 protein (arrow).