

Datasheet for ABIN1538268  
**anti-EXT1 antibody (AA 298-326)**[Go to Product page](#)

## 1 Image

## Overview

Quantity:	400 µL
Target:	EXT1
Binding Specificity:	AA 298-326
Reactivity:	Human
Host:	Rabbit
Clonality:	Polyclonal
Conjugate:	This EXT1 antibody is un-conjugated
Application:	Western Blotting (WB)

## Product Details

Immunogen:	This EXT1 antibody is generated from rabbits immunized with a KLH conjugated synthetic peptide between 298-326 amino acids from the Central region of human EXT1.
Clone:	RB36570
Isotype:	Ig Fraction
Predicted Reactivity:	B, Ha, M
Purification:	This antibody is purified through a protein A column, followed by peptide affinity purification.

## Target Details

Target:	EXT1
Alternative Name:	EXT1 ( <a href="#">EXT1 Products</a> )

## Target Details

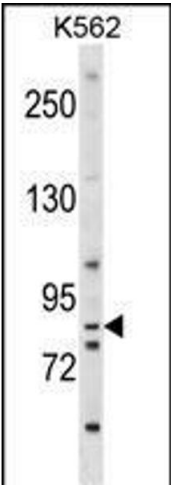
Background:	This gene encodes an endoplasmic reticulum-resident type II transmembrane glycosyltransferase involved in the chain elongation step of heparan sulfate biosynthesis. Mutations in this gene cause the type I form of multiple exostoses. [provided by RefSeq].
Molecular Weight:	86255
Gene ID:	2131
NCBI Accession:	<a href="#">NP_000118</a>
UniProt:	<a href="#">Q16394</a>
Pathways:	<a href="#">Glycosaminoglycan Metabolic Process</a>

## Application Details

Application Notes:	WB: 1:1000
Restrictions:	For Research Use only

## Handling

Format:	Liquid
Buffer:	Purified polyclonal antibody supplied in PBS with 0.09 % (W/V) sodium azide.
Preservative:	Sodium azide
Precaution of Use:	This product contains Sodium azide: a POISONOUS AND HAZARDOUS SUBSTANCE which should be handled by trained staff only.
Storage:	4 °C,-20 °C
Storage Comment:	EXT1 Antibody (Center) can be refrigerated at 2-8 °C for up to 6 months. For long term storage, keep at -20 °C.
Expiry Date:	6 months



Western Blotting

**Image 1.** EXT1 Antibody (Center) (ABIN1538268 and ABIN2848518) western blot analysis in K562 cell line lysates (35 µg/lane). This demonstrates the EXT1 antibody detected the EXT1 protein (arrow).