



[Go to Product page](#)

Datasheet for ABIN1538269
anti-RRP1 antibody (AA 298-326)

1 Image

Overview

Quantity:	400 µL
Target:	RRP1
Binding Specificity:	AA 298-326
Reactivity:	Human
Host:	Rabbit
Clonality:	Polyclonal
Conjugate:	This RRP1 antibody is un-conjugated
Application:	Western Blotting (WB)

Product Details

Immunogen:	This RRP1 antibody is generated from rabbits immunized with a KLH conjugated synthetic peptide between 298-326 amino acids from the Central region of human RRP1.
Clone:	RB39784
Isotype:	Ig Fraction
Predicted Reactivity:	M
Purification:	This antibody is purified through a protein A column, followed by peptide affinity purification.

Target Details

Target:	RRP1
Alternative Name:	RRP1 (RRP1 Products)

Target Details

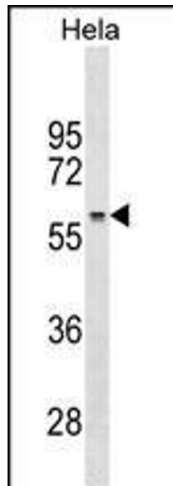
Background:	The protein encoded by this gene is the putative homolog of the yeast ribosomal RNA processing protein RRP1. The encoded protein is involved in the late stages of nucleologenesis at the end of mitosis, and may be required for the generation of 28S rRNA.
Molecular Weight:	52839
Gene ID:	8568
NCBI Accession:	NP_003674
UniProt:	P56182

Application Details

Application Notes:	WB: 1:1000
Restrictions:	For Research Use only

Handling

Format:	Liquid
Buffer:	Purified polyclonal antibody supplied in PBS with 0.09 % (W/V) sodium azide.
Preservative:	Sodium azide
Precaution of Use:	This product contains Sodium azide: a POISONOUS AND HAZARDOUS SUBSTANCE which should be handled by trained staff only.
Storage:	4 °C, -20 °C
Storage Comment:	RRP1 Antibody (Center) can be refrigerated at 2-8 °C for up to 6 months. For long term storage, keep at -20 °C.
Expiry Date:	6 months



Western Blotting

Image 1. RRP1 Antibody (Center) (ABIN1538269 and ABIN2838098) western blot analysis in HeLa cell line lysates (35 µg/lane). This demonstrates the RRP1 antibody detected the RRP1 protein (arrow).