



[Go to Product page](#)

Datasheet for ABIN1538270
anti-SEC23A antibody (AA 299-328)

1 Image

Overview

Quantity:	400 µL
Target:	SEC23A
Binding Specificity:	AA 299-328
Reactivity:	Human
Host:	Rabbit
Clonality:	Polyclonal
Conjugate:	This SEC23A antibody is un-conjugated
Application:	Western Blotting (WB)

Product Details

Immunogen:	This SEC23A antibody is generated from rabbits immunized with a KLH conjugated synthetic peptide between 299-328 amino acids from the Central region of human SEC23A.
Clone:	RB36810
Isotype:	Ig Fraction
Purification:	This antibody is purified through a protein A column, followed by peptide affinity purification.

Target Details

Target:	SEC23A
Alternative Name:	SEC23A (SEC23A Products)
Background:	The protein encoded by this gene is a member of the SEC23 subfamily of the SEC23/SEC24

Target Details

family. It is part of a protein complex and found in the ribosome-free transitional face of the endoplasmic reticulum (ER) and associated vesicles. This protein has similarity to yeast Sec23p component of COPII. COPII is the coat protein complex responsible for vesicle budding from the ER. The encoded protein is suggested to play a role in the ER-Golgi protein trafficking.

Molecular Weight: 86161

Gene ID: 10484

NCBI Accession: [NP_006355](#)

UniProt: [Q15436](#)

Application Details

Application Notes: WB: 1:1000

Restrictions: For Research Use only

Handling

Format: Liquid

Buffer: Purified polyclonal antibody supplied in PBS with 0.09 % (W/V) sodium azide.

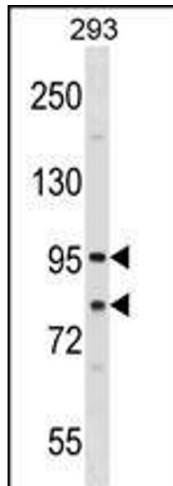
Preservative: Sodium azide

Precaution of Use: This product contains Sodium azide: a POISONOUS AND HAZARDOUS SUBSTANCE which should be handled by trained staff only.

Storage: 4 °C, -20 °C

Storage Comment: SEC23A Antibody (Center) can be refrigerated at 2-8 °C for up to 6 months. For long term storage, keep at -20 °C.

Expiry Date: 6 months



Western Blotting

Image 1. SEC23A Antibody (Center) (ABIN1538270 and ABIN2848682) western blot analysis in 293 cell line lysates (35 µg/lane). This demonstrates the SEC23A antibody detected the SEC23A protein (arrow).