

Datasheet for ABIN1538272  
**anti-APBA3 antibody (AA 299-327)**[Go to Product page](#)

## 1 Image

## Overview

Quantity:	400 µL
Target:	APBA3
Binding Specificity:	AA 299-327
Reactivity:	Human
Host:	Rabbit
Clonality:	Polyclonal
Application:	Western Blotting (WB)

## Product Details

Immunogen:	This APBA3 antibody is generated from rabbits immunized with a KLH conjugated synthetic peptide between 299-327 amino acids from the Central region of human APBA3.
Clone:	RB39201
Isotype:	Ig Fraction
Purification:	This antibody is purified through a protein A column, followed by peptide affinity purification.

## Target Details

Target:	APBA3
Alternative Name:	APBA3 ( <a href="#">APBA3 Products</a> )
Background:	The protein encoded by this gene is a member of the X11 protein family. It is an adapter protein that interacts with the Alzheimer's disease amyloid precursor protein. This gene product is believed to be involved in signal transduction processes. This gene is a candidate gene for

## Target Details

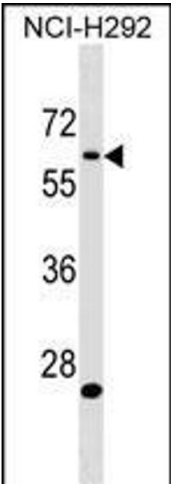
	Alzheimer's disease.
Molecular Weight:	61454
Gene ID:	9546
NCBI Accession:	<a href="#">NP_004877</a>
UniProt:	<a href="#">O96018</a>

## Application Details

Application Notes:	WB: 1:1000
Restrictions:	For Research Use only

## Handling

Format:	Liquid
Buffer:	Purified polyclonal antibody supplied in PBS with 0.09 % (W/V) sodium azide.
Preservative:	Sodium azide
Precaution of Use:	This product contains Sodium azide: a POISONOUS AND HAZARDOUS SUBSTANCE which should be handled by trained staff only.
Storage:	4 °C,-20 °C
Storage Comment:	APBA3 Antibody (Center) can be refrigerated at 2-8 °C for up to 6 months. For long term storage, keep at -20 °C.
Expiry Date:	6 months



Western Blotting

**Image 1.** BA3 Antibody (Center) 18975c western blot analysis in NCI- cell line lysates (35 µg/lane). This demonstrates the BA3 antibody detected the BA3 protein (arrow).