

Datasheet for ABIN1538279
anti-GDPD2 antibody (AA 305-334)[Go to Product page](#)

1 Image

Overview

Quantity:	400 µL
Target:	GDPD2
Binding Specificity:	AA 305-334
Reactivity:	Human
Host:	Rabbit
Clonality:	Polyclonal
Application:	Western Blotting (WB)

Product Details

Immunogen:	This GDPD2 antibody is generated from rabbits immunized with a KLH conjugated synthetic peptide between 305-334 amino acids from the Central region of human GDPD2.
Clone:	RB38460
Isotype:	Ig Fraction
Purification:	This antibody is purified through a protein A column, followed by peptide affinity purification.

Target Details

Target:	GDPD2
Alternative Name:	GDPD2 (GDPD2 Products)
Background:	This gene encodes a member of the glycerophosphodiester phosphodiesterase enzyme family. The encoded protein hydrolyzes glycerophosphoinositol to produce inositol 1-phosphate and glycerol. This protein may have a role in osteoblast differentiation and growth. Alternate splicing

Target Details

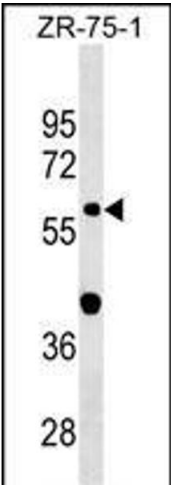
	results in multiple transcript variants.
Molecular Weight:	61729
Gene ID:	54857
NCBI Accession:	NP_001164662 , NP_001164663 , NP_001164664 , NP_060181
UniProt:	Q9HCC8

Application Details

Application Notes:	WB: 1:1000
Restrictions:	For Research Use only

Handling

Format:	Liquid
Buffer:	Purified polyclonal antibody supplied in PBS with 0.09 % (W/V) sodium azide.
Preservative:	Sodium azide
Precaution of Use:	This product contains Sodium azide: a POISONOUS AND HAZARDOUS SUBSTANCE which should be handled by trained staff only.
Storage:	4 °C,-20 °C
Storage Comment:	GDPD2 Antibody (Center) can be refrigerated at 2-8 °C for up to 6 months. For long term storage, keep at -20 °C.
Expiry Date:	6 months



Western Blotting

Image 1. GDPD2 Antibody (Center) (ABIN1538279 and ABIN2849892) western blot analysis in ZR-75-1 cell line lysates (35 µg/lane). This demonstrates the GDPD2 Antibody detected the GDPD2 protein (arrow).