



[Go to Product page](#)

Datasheet for ABIN1538281
anti-DCDC2 antibody (AA 306-334)

1 Image

Overview

| | |
|----------------------|-----------------------|
| Quantity: | 400 µL |
| Target: | DCDC2 |
| Binding Specificity: | AA 306-334 |
| Reactivity: | Human |
| Host: | Rabbit |
| Clonality: | Polyclonal |
| Application: | Western Blotting (WB) |

Product Details

| | |
|-----------------------|---|
| Immunogen: | This DCDC2 antibody is generated from rabbits immunized with a KLH conjugated synthetic peptide between 306-334 amino acids from the Central region of human DCDC2. |
| Clone: | RB30362 |
| Isotype: | Ig Fraction |
| Predicted Reactivity: | M |
| Purification: | This antibody is purified through a protein A column, followed by peptide affinity purification. |

Target Details

| | |
|-------------------|---|
| Target: | DCDC2 |
| Alternative Name: | DCDC2 (DCDC2 Products) |
| Background: | This gene encodes a protein with two doublecortin peptide domains. This domain has been |

Target Details

demonstrated to bind tubulin and enhance microtubule polymerization. Mutations in this gene have been associated with Reading Disability (RD), also referred to as developmental dyslexia.

Molecular Weight: 52834

Gene ID: 51473

NCBI Accession: [NP_001182539, NP_057440](#)

UniProt: [Q9UHG0](#)

Application Details

Application Notes: WB: 1:1000

Restrictions: For Research Use only

Handling

Format: Liquid

Buffer: Purified polyclonal antibody supplied in PBS with 0.09 % (W/V) sodium azide.

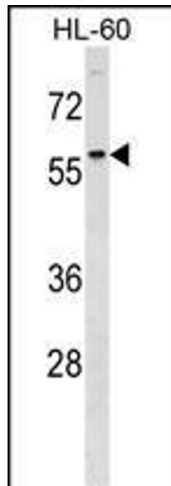
Preservative: Sodium azide

Precaution of Use: This product contains Sodium azide: a POISONOUS AND HAZARDOUS SUBSTANCE which should be handled by trained staff only.

Storage: 4 °C, -20 °C

Storage Comment: DCDC2 Antibody (Center) can be refrigerated at 2-8 °C for up to 6 months. For long term storage, keep at -20 °C.

Expiry Date: 6 months



Western Blotting

Image 1. DCDC2 Antibody (Center) (ABIN1538281 and ABIN2848548) western blot analysis in HL-60 cell line lysates (35 µg/lane). This demonstrates the DCDC2 antibody detected the DCDC2 protein (arrow).