

Datasheet for ABIN1538283
anti-LCP1 antibody (AA 306-335)[Go to Product page](#)

1 Image

Overview

Quantity:	400 µL
Target:	LCP1
Binding Specificity:	AA 306-335
Reactivity:	Human
Host:	Rabbit
Clonality:	Polyclonal
Application:	Western Blotting (WB)

Product Details

Immunogen:	This LCP1 antibody is generated from rabbits immunized with a KLH conjugated synthetic peptide between 306-335 amino acids from the Central region of human LCP1.
Clone:	RB39488
Isotype:	Ig Fraction
Predicted Reactivity:	M
Purification:	This antibody is purified through a protein A column, followed by peptide affinity purification.

Target Details

Target:	LCP1
Alternative Name:	LCP1 (LCP1 Products)
Background:	Plastins are a family of actin-binding proteins that are conserved throughout eukaryote

Target Details

evolution and expressed in most tissues of higher eukaryotes. In humans, two ubiquitous plastin isoforms (L and T) have been identified. Plastin 1 (otherwise known as Fimbrin) is a third distinct plastin isoform which is specifically expressed at high levels in the small intestine. The L isoform is expressed only in hemopoietic cell lineages, while the T isoform has been found in all other normal cells of solid tissues that have replicative potential (fibroblasts, endothelial cells, epithelial cells, melanocytes, etc.). However, L-plastin has been found in many types of malignant human cells of non-hemopoietic origin suggesting that its expression is induced accompanying tumorigenesis in solid tissues.

Molecular Weight:	70288
-------------------	-------

Gene ID:	3936
----------	------

NCBI Accession:	NP_002289
-----------------	---------------------------

UniProt:	P13796
----------	------------------------

Application Details

Application Notes:	WB: 1:1000
--------------------	------------

Restrictions:	For Research Use only
---------------	-----------------------

Handling

Format:	Liquid
---------	--------

Buffer:	Purified polyclonal antibody supplied in PBS with 0.09 % (W/V) sodium azide.
---------	--

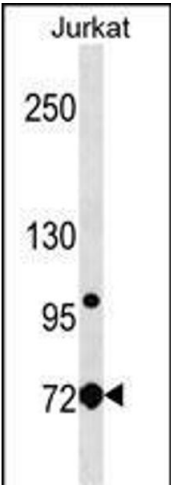
Preservative:	Sodium azide
---------------	--------------

Precaution of Use:	This product contains Sodium azide: a POISONOUS AND HAZARDOUS SUBSTANCE which should be handled by trained staff only.
--------------------	--

Storage:	4 °C,-20 °C
----------	-------------

Storage Comment:	LCP1 Antibody (Center) can be refrigerated at 2-8 °C for up to 6 months. For long term storage, keep at -20 °C.
------------------	---

Expiry Date:	6 months
--------------	----------



Western Blotting

Image 1. LCP1 Antibody (Center) (ABIN1538283 and ABIN2850258) western blot analysis in Jurkat cell line lysates (35 µg/lane). This demonstrates the LCP1 antibody detected the LCP1 protein (arrow).