

Datasheet for ABIN1538297  
**anti-ZBTB7B antibody (AA 315-343)**



[Go to Product page](#)

2 Images

### Overview

Quantity:	400 µL
Target:	ZBTB7B
Binding Specificity:	AA 315-343
Reactivity:	Human
Host:	Rabbit
Clonality:	Polyclonal
Conjugate:	This ZBTB7B antibody is un-conjugated
Application:	Western Blotting (WB)

### Product Details

Immunogen:	This ZBTB7B antibody is generated from rabbits immunized with a KLH conjugated synthetic peptide between 315-343 amino acids from the Central region of human ZBTB7B.
Clone:	RB36743
Isotype:	Ig Fraction
Purification:	This antibody is purified through a protein A column, followed by peptide affinity purification.

### Target Details

Target:	ZBTB7B
Alternative Name:	ZBTB7B ( <a href="#">ZBTB7B Products</a> )
Background:	ZFP67 is an early growth response gene that encodes a zinc finger-containing transcription

## Target Details

---

factor that binds to the promoter regions of type I collagen genes (e.g., COL1A1, MIM 120150) and has a role in development.

Molecular Weight: 58027

Gene ID: 100293130, 51043

NCBI Accession: [NP\\_001239335](#), [NP\\_001243384](#)

UniProt: [O15156](#)

## Application Details

---

Application Notes: WB: 1:1000. WB: 1:1000

Restrictions: For Research Use only

## Handling

---

Format: Liquid

Buffer: Purified polyclonal antibody supplied in PBS with 0.09 % (W/V) sodium azide.

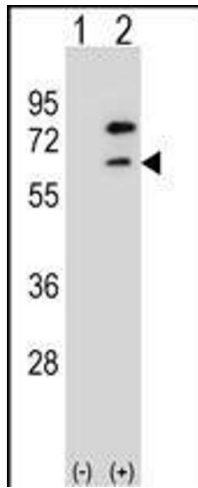
Preservative: Sodium azide

Precaution of Use: This product contains Sodium azide: a POISONOUS AND HAZARDOUS SUBSTANCE which should be handled by trained staff only.

Storage: 4 °C, -20 °C

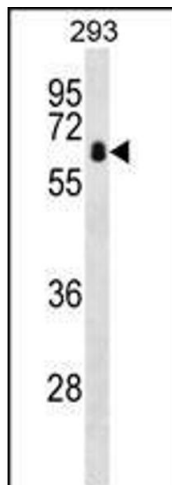
Storage Comment: ZBTB7B Antibody (Center) can be refrigerated at 2-8 °C for up to 6 months. For long term storage, keep at -20 °C.

Expiry Date: 6 months



#### Western Blotting

**Image 1.** Western blot analysis of ZBTB7B (arrow) using rabbit polyclonal ZBTB7B Antibody (Center) (ABIN1538297 and ABIN2848651). 293 cell lysates (2 µg/lane) either nontransfected (Lane 1) or transiently transfected (Lane 2) with the ZBTB7B gene.



#### Western Blotting

**Image 2.** ZBTB7B Antibody (Center) (ABIN1538297 and ABIN2848651) western blot analysis in 293 cell line lysates (35 µg/lane). This demonstrates the ZBTB7B antibody detected the ZBTB7B protein (arrow).