

Datasheet for ABIN1538298
anti-LRRC4C antibody (AA 316-343)[Go to Product page](#)

1 Image

Overview

Quantity:	400 µL
Target:	LRRC4C
Binding Specificity:	AA 316-343
Reactivity:	Human, Mouse
Host:	Rabbit
Clonality:	Polyclonal
Conjugate:	This LRRC4C antibody is un-conjugated
Application:	Western Blotting (WB)

Product Details

Immunogen:	This LRRC4C antibody is generated from rabbits immunized with a KLH conjugated synthetic peptide between 316-343 amino acids from the Central region of human LRRC4C.
Clone:	RB38292
Isotype:	Ig Fraction
Purification:	This antibody is purified through a protein A column, followed by peptide affinity purification.

Target Details

Target:	LRRC4C
Alternative Name:	LRRC4C (LRRC4C Products)
Background:	NGL1 is a specific binding partner for netrin G1 (NTNG1, MIM 608818), which is a member of

Target Details

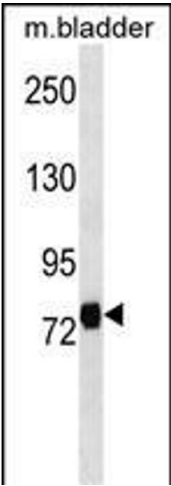
	the netrin family of axon guidance molecules (Lin et al., 2003 [PubMed 14595443]).[supplied by OMIM].
Molecular Weight:	71950
Gene ID:	57689
NCBI Accession:	NP_001245348 , NP_065980
UniProt:	Q9HCJ2
Pathways:	Synaptic Membrane

Application Details

Application Notes:	WB: 1:1000
Restrictions:	For Research Use only

Handling

Format:	Liquid
Buffer:	Purified polyclonal antibody supplied in PBS with 0.09 % (W/V) sodium azide.
Preservative:	Sodium azide
Precaution of Use:	This product contains Sodium azide: a POISONOUS AND HAZARDOUS SUBSTANCE which should be handled by trained staff only.
Storage:	4 °C, -20 °C
Storage Comment:	LRRC4C Antibody (Center) can be refrigerated at 2-8 °C for up to 6 months. For long term storage, keep at -20 °C.
Expiry Date:	6 months



Western Blotting

Image 1. LRRC4C Antibody (Center) (ABIN1538298 and ABIN2849978) western blot analysis in mouse bladder tissue lysates (35 µg/lane). This demonstrates the LRRC4C antibody detected the LRRC4C protein (arrow).