



[Go to Product page](#)

Datasheet for ABIN1538299  
**anti-PRIM2 antibody (AA 317-345)**

1 Image

### Overview

Quantity:	400 µL
Target:	PRIM2
Binding Specificity:	AA 317-345
Reactivity:	Human
Host:	Rabbit
Clonality:	Polyclonal
Application:	Western Blotting (WB)

### Product Details

Immunogen:	This PRIM2 antibody is generated from rabbits immunized with a KLH conjugated synthetic peptide between 317-345 amino acids from the Central region of human PRIM2.
Clone:	RB37087
Isotype:	Ig Fraction
Predicted Reactivity:	Rat
Purification:	This antibody is purified through a protein A column, followed by peptide affinity purification.

### Target Details

Target:	PRIM2
Alternative Name:	PRIM2 ( <a href="#">PRIM2 Products</a> )
Background:	The replication of DNA in eukaryotic cells is carried out by a complex chromosomal replication

## Target Details

---

apparatus, in which DNA polymerase alpha and primase are two key enzymatic components. Primase, which is a heterodimer of a small subunit and a large subunit, synthesizes small RNA primers for the Okazaki fragments made during discontinuous DNA replication. The protein encoded by this gene is the large, 58 kDa primase subunit. [provided by RefSeq].

Molecular Weight: 58806

Gene ID: 5558

NCBI Accession: [NP\\_000938](#)

UniProt: [P49643](#)

Pathways: [Telomere Maintenance](#), [Mitotic G1-G1/S Phases](#), [DNA Replication](#), [Synthesis of DNA](#), [SARS-CoV-2 Protein Interactome](#)

## Application Details

---

Application Notes: WB: 1:1000

Restrictions: For Research Use only

## Handling

---

Format: Liquid

Buffer: Purified polyclonal antibody supplied in PBS with 0.09 % (W/V) sodium azide.

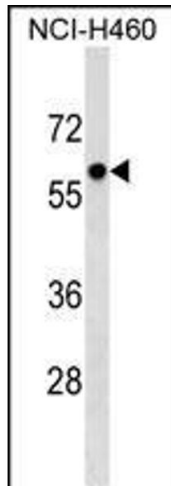
Preservative: Sodium azide

Precaution of Use: This product contains Sodium azide: a POISONOUS AND HAZARDOUS SUBSTANCE which should be handled by trained staff only.

Storage: 4 °C, -20 °C

Storage Comment: PRIM2 Antibody (Center) can be refrigerated at 2-8 °C for up to 6 months. For long term storage, keep at -20 °C.

Expiry Date: 6 months



### Western Blotting

**Image 1.** PRIM2 Antibody (Center) (ABIN1538299 and ABIN2849047) western blot analysis in NCI- cell line lysates (35 µg/lane). This demonstrates the PRIM2 antibody detected the PRIM2 protein (arrow).