

Datasheet for ABIN1538302
anti-TBC1D3 antibody (AA 318-346)[Go to Product page](#)

1 Image

Overview

Quantity:	400 µL
Target:	TBC1D3
Binding Specificity:	AA 318-346
Reactivity:	Human
Host:	Rabbit
Clonality:	Polyclonal
Conjugate:	This TBC1D3 antibody is un-conjugated
Application:	Western Blotting (WB)

Product Details

Immunogen:	This TBC1D3F antibody is generated from rabbits immunized with a KLH conjugated synthetic peptide between 318-346 amino acids from the Central region of human TBC1D3F.
Clone:	RB40299
Isotype:	Ig Fraction
Purification:	This antibody is purified through a protein A column, followed by peptide affinity purification.

Target Details

Target:	TBC1D3
Alternative Name:	TBC1D3F (TBC1D3 Products)
Background:	TBC1D3E acts as a GTPase activating protein for RAB5. Does not act on RAB4 or RAB11 (By

Target Details

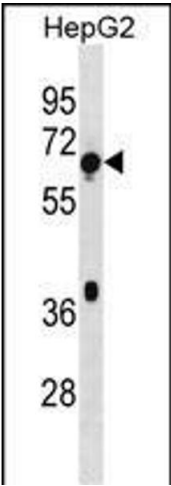
	similarity).
Molecular Weight:	62185
Gene ID:	84218
NCBI Accession:	NP_115634
UniProt:	A6NER0

Application Details

Application Notes:	WB: 1:1000
Restrictions:	For Research Use only

Handling

Format:	Liquid
Buffer:	Purified polyclonal antibody supplied in PBS with 0.09 % (W/V) sodium azide.
Preservative:	Sodium azide
Precaution of Use:	This product contains Sodium azide: a POISONOUS AND HAZARDOUS SUBSTANCE which should be handled by trained staff only.
Storage:	4 °C,-20 °C
Storage Comment:	TBC1D3F Antibody (Center) can be refrigerated at 2-8 °C for up to 6 months. For long term storage, keep at -20 °C.
Expiry Date:	6 months



Western Blotting

Image 1. TBC1D3F Antibody (Center) (ABIN1538302 and ABIN2838342) western blot analysis in HepG2 cell line lysates (35 µg/lane). This demonstrates the TBC1D3F antibody detected the TBC1D3F protein (arrow).