

Datasheet for ABIN1538305
anti-ATG4D antibody (AA 321-346)



[Go to Product page](#)

1 Image

Overview

Quantity:	400 µL
Target:	ATG4D
Binding Specificity:	AA 321-346
Reactivity:	Human
Host:	Rabbit
Clonality:	Polyclonal
Conjugate:	This ATG4D antibody is un-conjugated
Application:	Western Blotting (WB)

Product Details

Immunogen:	This APG4D antibody is generated from rabbits immunized with a KLH conjugated synthetic peptide between 321-346 amino acids from the Central region of human APG4D.
Clone:	RB36876
Isotype:	Ig Fraction
Predicted Reactivity:	M, Pig
Purification:	This antibody is purified through a protein A column, followed by peptide affinity purification.

Target Details

Target:	ATG4D
Alternative Name:	APG4D (ATG4D Products)

Target Details

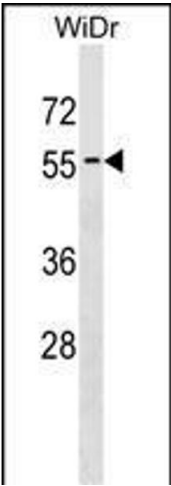
Background:	Autophagy is the process by which endogenous proteins and damaged organelles are destroyed intracellularly. Autophagy is postulated to be essential for cell homeostasis and cell remodeling during differentiation, metamorphosis, non-apoptotic cell death, and aging. Reduced levels of autophagy have been described in some malignant tumors, and a role for autophagy in controlling the unregulated cell growth linked to cancer has been proposed. This gene encodes a member of the autophagin protein family. The encoded protein is also designated as a member of the C-54 family of cysteine proteases.
Molecular Weight:	52922
Gene ID:	84971
NCBI Accession:	NP_001268433 , NP_116274
UniProt:	Q86TL0
Pathways:	Autophagy

Application Details

Application Notes:	WB: 1:1000
Restrictions:	For Research Use only

Handling

Format:	Liquid
Buffer:	Purified polyclonal antibody supplied in PBS with 0.09 % (W/V) sodium azide.
Preservative:	Sodium azide
Precaution of Use:	This product contains Sodium azide: a POISONOUS AND HAZARDOUS SUBSTANCE which should be handled by trained staff only.
Storage:	4 °C,-20 °C
Storage Comment:	APG4D Antibody (Center S341) can be refrigerated at 2-8 °C for up to 6 months. For long term storage, keep at -20 °C.
Expiry Date:	6 months



Western Blotting

Image 1. G4D Antibody (Center) 17051c western blot analysis in WiDr cell line lysates (35 µg/lane). This demonstrates the G4D antibody detected the G4D protein (arrow).