

Datasheet for ABIN1538307
anti-MCM8 antibody (AA 322-350)[Go to Product page](#)

1 Image

Overview

Quantity:	400 µL
Target:	MCM8
Binding Specificity:	AA 322-350
Reactivity:	Human
Host:	Rabbit
Clonality:	Polyclonal
Conjugate:	This MCM8 antibody is un-conjugated
Application:	Western Blotting (WB)

Product Details

Immunogen:	This MCM8 antibody is generated from rabbits immunized with a KLH conjugated synthetic peptide between 322-350 amino acids from the Central region of human MCM8.
Clone:	RB36786
Isotype:	Ig Fraction
Purification:	This antibody is purified through a protein A column, followed by peptide affinity purification.

Target Details

Target:	MCM8
Alternative Name:	MCM8 (MCM8 Products)
Background:	The protein encoded by this gene is one of the highly conserved mini-chromosome

Target Details

maintenance proteins (MCM) that are essential for the initiation of eukaryotic genome replication. The hexameric protein complex formed by the MCM proteins is a key component of the pre-replication complex (pre_RC) and may be involved in the formation of replication forks and in the recruitment of other DNA replication related proteins. This protein contains the central domain that is conserved among the MCM proteins. This protein has been shown to co-immunoprecipitate with MCM4, 6 and 7, which suggests that it may interact with other MCM proteins and play a role in DNA replication. Alternatively spliced transcript variants encoding distinct isoforms have been described.

Molecular Weight: 93697

Gene ID: 84515

NCBI Accession: [NP_001268449](#), [NP_001268450](#), [NP_001268451](#), [NP_115874](#), [NP_877954](#)

UniProt: [Q9UJA3](#)

Pathways: [Mitotic G1-G1/S Phases](#), [DNA Replication](#), [Synthesis of DNA](#)

Application Details

Application Notes: WB: 1:1000

Restrictions: For Research Use only

Handling

Format: Liquid

Buffer: Purified polyclonal antibody supplied in PBS with 0.09 % (W/V) sodium azide.

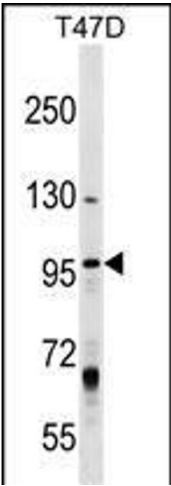
Preservative: Sodium azide

Precaution of Use: This product contains Sodium azide: a POISONOUS AND HAZARDOUS SUBSTANCE which should be handled by trained staff only.

Storage: 4 °C, -20 °C

Storage Comment: MCM8 Antibody (Center) can be refrigerated at 2-8 °C for up to 6 months. For long term storage, keep at -20 °C.

Expiry Date: 6 months



Western Blotting

Image 1. MCM8 Antibody (Center) (ABIN1538307 and ABIN2849026) western blot analysis in T47D cell line lysates (35 µg/lane). This demonstrates the MCM8 antibody detected the MCM8 protein (arrow).