



[Go to Product page](#)

Datasheet for ABIN1538311
anti-SASS6 antibody (AA 325-352)

1 Image

Overview

Quantity:	400 µL
Target:	SASS6
Binding Specificity:	AA 325-352
Reactivity:	Human
Host:	Rabbit
Clonality:	Polyclonal
Application:	Western Blotting (WB)

Product Details

Immunogen:	This SASS6 antibody is generated from rabbits immunized with a KLH conjugated synthetic peptide between 325-352 amino acids from the Central region of human SASS6.
Clone:	RB37756
Isotype:	Ig Fraction
Predicted Reactivity:	M
Purification:	This antibody is purified through a protein A column, followed by peptide affinity purification.

Target Details

Target:	SASS6
Alternative Name:	SASS6 (SASS6 Products)
Background:	SAS6 is necessary for centrosome duplication and functions during procentriole formation,

Target Details

SAS6 functions to ensure that each centriole seeds the formation of a single procentriole per cell cycle Strnad et al., (2007) [PubMed 17681132].

Molecular Weight: 74397

Gene ID: 163786

NCBI Accession: [NP_919268](#)

UniProt: [Q6UVJ0](#)

Application Details

Application Notes: WB: 1:1000

Restrictions: For Research Use only

Handling

Format: Liquid

Buffer: Purified polyclonal antibody supplied in PBS with 0.09 % (W/V) sodium azide.

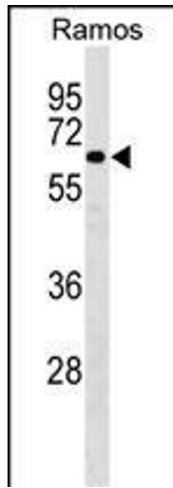
Preservative: Sodium azide

Precaution of Use: This product contains Sodium azide: a POISONOUS AND HAZARDOUS SUBSTANCE which should be handled by trained staff only.

Storage: 4 °C,-20 °C

Storage Comment: SASS6 Antibody (Center) can be refrigerated at 2-8 °C for up to 6 months. For long term storage, keep at -20 °C.

Expiry Date: 6 months



Western Blotting

Image 1. SASS6 Antibody (Center) (ABIN1538311 and ABIN2849568) western blot analysis in Ramos cell line lysates (35 µg/lane). This demonstrates the SASS6 antibody detected the SASS6 protein (arrow).